

EMILY LOG CABIN CUSHION



FINISHED SIZE - 18" x 18"

Welcome



This cushion pairs the Emily Annabelle prints with Emily Belle fabrics in a repeated log cabin design. The mix of prints gives a lovely bright cushion, perfect to welcome in spring and summer.

I would love to see what you make please do tag me @morristextiles on social media.

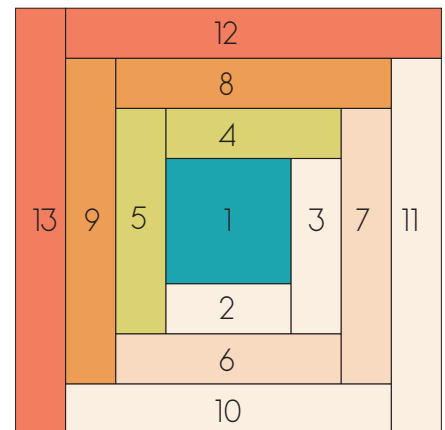
Fabric Requirements

- Emily Annabelle H - 01667525H- Fat Quarter
- Emily Annabelle I - 01667525I- Fat Quarter
- Emily Belle Tangerine - 01666432A - Fat Quarter
- Emily Belle Saffron - 01666402A - Fat Quarter
- Emily Belle Peacock - 01666413A - Fat Quarter
- Emily Belle Lime - 01666411A - 1 Fat Eighth
- Wadding - 1/2yd

Pattern Notes

- Fabric quantities are based on a usable width of 42" unless otherwise stated.
- Please read the pattern through in full before starting.
- All measurements are in inches and seam allowances are 1/4" throughout.
- WOFQ is the Width of a Fat Quarter (or Fat Eighth) which is approx 21".

- Piece 1 - 3½" Square
- Piece 2 - 1½" X 3½"
- Piece 3 - 1½" X 4½"
- Piece 4 - 1½" X 4½"
- Piece 5 - 1½" X 5½"
- Piece 6 - 1½" X 5½"
- Piece 7 - 1½" X 6½"
- Piece 8 - 1½" X 6½"
- Piece 9 - 1½" X 7½"
- Piece 10 - 1½" X 7½"
- Piece 11 - 1½" X 8½"
- Piece 12 - 1½" X 8½"
- Piece 13 - 1½" X 9½"



Cutting Guide

The cushion is made using 4 Emily Belle prints and two Emily Annabelle prints. Save the extras to create your cushion backing.

From Emily Belle Peacock fabric cut the following:

- (1x) 3½" WOFQ strip, sub cut into;
 - » (x4) 3½" squares (Piece 1)
- (4x) 2½" WOFQ strips for the cushion binding
- (2x) 2" WOFQ for binding the backing edges

From Emily Belle Lime fabric cut the following:

- (2x) 1½" WOFQ strips, sub cut into;
 - » (x4) 1½" x 4½" rectangles (Piece 4)
 - » (x4) 1½" x 5½" rectangles (Piece 5)

From Emily Belle Saffron fabric cut the following:

- (3x) 1½" WOFQ strips, sub cut into;
 - » (x4) 1½" x 6½" rectangles (Piece 8)
 - » (x4) 1½" x 7½" rectangles (Piece 9)

From Emily Belle Tangerine fabric cut the following:

- (4x) 1½" WOFQ strips, sub cut into;
 - » (x4) 1½" x 8½" rectangles (Piece 12)
 - » (x4) 1½" x 9½" rectangles (Piece 13)

From Emily Annabelle H fabric cut the following:

- (5x) 1½" WOFQ strips, sub cut into;
 - » (x4) 1½" x 3½" rectangles (Piece 2)
 - » (x4) 1½" x 4½" rectangles (Piece 3)
 - » (x4) 1½" x 7½" rectangles (Piece 10)
 - » (x4) 1½" x 8½" rectangles (Piece 11)

From Emily Annabelle I fabric cut the following:

- (3x) 1½" WOFQ strips, sub cut into;
 - » (x4) 1½" x 5½" rectangles (Piece 6)
 - » (x4) 1½" x 6½" rectangles (Piece 7)

*Save the remaining fabric to create the cushion backing.



Block Construction



(fig 1)



(fig 2)



(fig 3)



(fig 4)

1. To construct the blocks we work outwards from the centre square. So your first seam is sewing Piece 2 ($1\frac{1}{2}'' \times 3\frac{1}{2}''$) rectangle to the bottom of the $3\frac{1}{2}''$ centre square (Piece 1). Once sewn press the seam open or outwards (fig 1).
2. Next take a Piece 3 ($1\frac{1}{2}'' \times 4\frac{1}{2}''$) rectangle and sew to the right hand side of the piece from above (fig 2).
3. Once pressed take a piece 4 ($1\frac{1}{2}'' \times 4\frac{1}{2}''$) rectangle but this time sew to the top of the piece (fig 3).
4. To finish the first round sew a Piece 5 ($1\frac{1}{2}'' \times 5\frac{1}{2}''$) rectangle to the right hand side (fig 3).
5. Complete the second and third rows in the same way, start at the bottom and work counter clockwise.
6. Repeat so that you have a total of four (4) log cabin blocks.



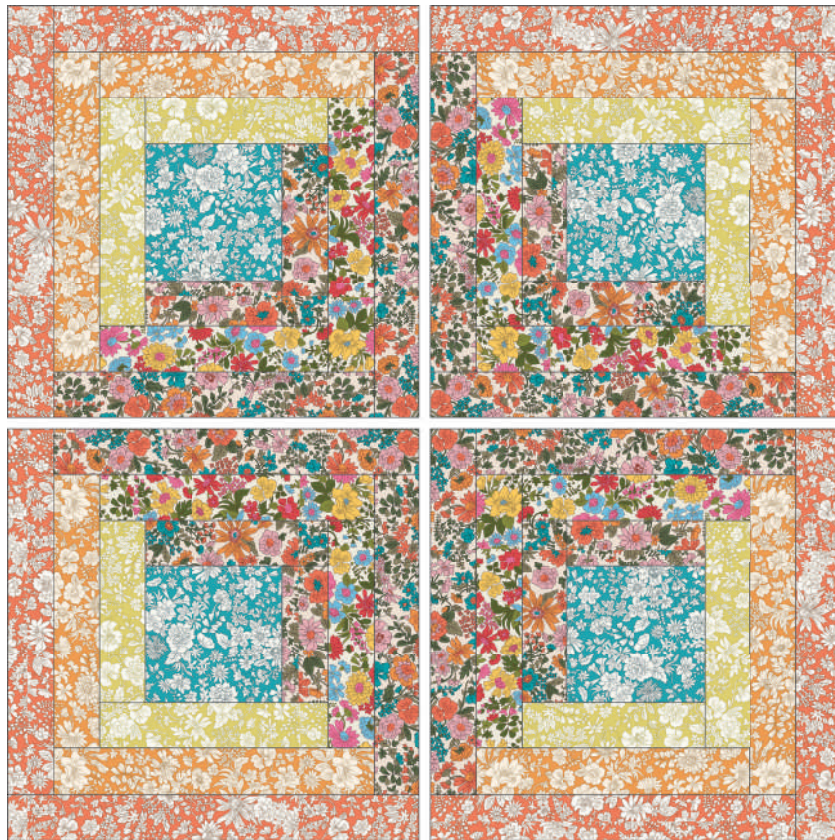
(fig 5)



(fig 6)

Making the cushion pieces

7. The cushion top is created by sewing the four log cabin blocks together. Orientate them so that the Emily Annabelle fabrics are in the centre (fig 7).

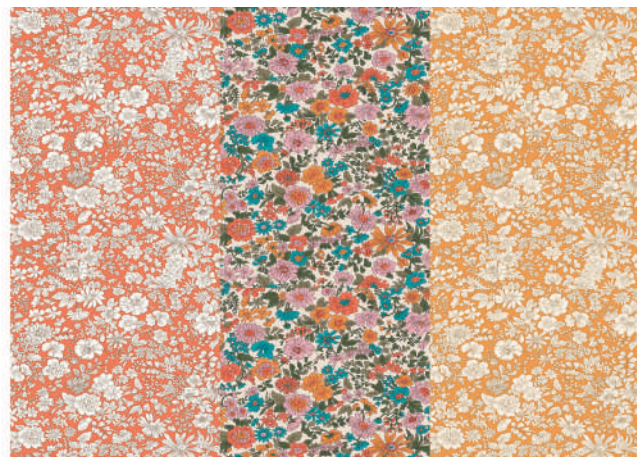


(fig 7)

8. The cushion backing is created by using the left overs from the fat quarters. Below is a suggested layout for the two pieces. Piece 1 is the Emily Annabelle H (18½" x 13"). Piece 2 is created with 6½" x 13" strips of the Tangerine, Saffron and Emily Annabelle I fabric in the middle (figs 8 and 9).



(fig 8)



(fig 9)

Finishing the cushion

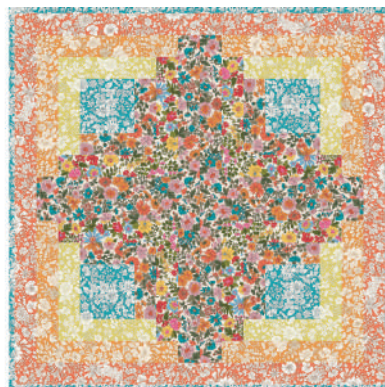
9. Baste the two backing pieces onto a piece of wadding and quilt as desired.
10. Take the two 2" binding strips and fold in half lengthways. Apply the binding to the bottom side of the top backing piece and the top of the bottom backing piece.
11. Place the cushion front right side down (so you see the wadding) and then place the bottom backing piece down facing upwards and aligned at the bottom (fig 10).
12. Place the top backing piece on top, aligned with the top edge, the two backing pieces will overlap (fig 11).
13. Pin or clip in place and sew around the outer edge of the cushion with a scant 1/4" seam.
14. Prepare the cushion binding from the 2½" binding strips by sewing together and then pressing in half lengthways.
15. Sew the binding to the cushion front, mitre the corners and then fold over and hand sew down to finish (fig 12).



(fig 10)



(fig 11)



(fig 12)

Pattern for personal use only. This pattern may not be reproduced, copied, shared or distributed in any way. You may sell items made from this pattern as long as they are made by you, on a small scale and please credit Leisa Morris White (**Morris Textiles**) as the pattern designer. Many thanks!

