

Everlasting



Quilt Size: 60" x 60" (152cm x 152cm)
Skill Level: Advanced

Fabric Requirements:

Wiltshire Shadow-Petal (A)	4 yards (3.66m)	01666517A
Soho Stripe-Pink (B)	$\frac{7}{8}$ yard (0.81m)	01667513B
Wiltshire Shadow-Lake Blue (C)	$\frac{2}{3}$ yard (0.61m)*	01666537A
Wiltshire Shadow-Rose Pink (D)	$\frac{1}{4}$ yard (0.23m)	01666518A
Tumbling Daisy-Blue (E)	$\frac{3}{8}$ yard (0.34m)	01667515A
Posy Haze-Purple (F)	$\frac{1}{4}$ yard (0.23m)	01667511A
Arley Rose-Purple (G)	$\frac{1}{2}$ yard (0.46m)	01667514A
Forget Me Not Blossom-Purple (H)	$\frac{3}{8}$ yard (0.34m)	01667512A
Ricardo-Blue (I)	$\frac{5}{8}$ yard (0.57m)	01667510A
Mamie Flower-Light Green (J)	$\frac{1}{4}$ yard (0.23m)	01667516B
Tumbling Daisy-Pink (K)	$\frac{1}{4}$ yard (0.23m)	01667515B
Arley Rose-Pink (L)	$\frac{3}{8}$ yard (0.34m)	01667514B
Ricardo-Pink (M)	$\frac{1}{4}$ yard (0.23m)	01667510B
Posy Haze-Pink (N)	$\frac{1}{4}$ yard (0.23m)	01667511B
Flowertop Forest-Blue (O)	$\frac{1}{4}$ yard (0.23m)	01667517A
Tumbling Daisy-Pink (Back)	4 yards (3.66m)	01667515B

*Includes binding

You will also need:

- (1) piece of batting 68" x 68" (173cm x 173cm)
- Basic sewing supplies and tools

Cutting Instructions: WOF/LOF = Width of Fabric/Length of Fabric

Wiltshire Shadow – Petal (A), cut:

- (6) 13" x WOF strips. Sub-cut (16) 13" squares. Fold each square in half twice to make (16) 3 $\frac{1}{4}$ " squares. Line up the square's fold on the Template 8 as indicated to cut Template 8 pieces.
- (64) Template 7 pieces.

Soho Stripe – Pink (B), cut:

- (7) 2 $\frac{1}{2}$ " x WOF strips for outer border.
- (32) Template 3 pieces.

Wiltshire Shadow – Lake Blue (C), cut:

- (16) Template 2 pieces.
- (6) 2 $\frac{1}{2}$ " x WOF strips for the binding.

Wiltshire Shadow – Rose Pink (D), cut:

- (16) Template 2 pieces.

Tumbling Daisy – Blue (E), cut:

- (16) Template 1 pieces.
- (32) Template 6 pieces.

Posy Haze – Purple (F), cut:

- (16) Template 5 pieces.

Arley Rose – Purple (G), cut:

- (16) Template 1 pieces.
- (16) Template 2 pieces.
- (16) Template 3 pieces.

Forget Me Not Blossom – Purple (H), cut:

- (16) Template 4 pieces.
- (16) Template 5 pieces.

Ricardo – Blue (I), cut:

- (16) Template 1 pieces.
- (32) Template 4 pieces.
- (16) Template 5 pieces.

Mamie Flower – Light Green (J), cut:

- (16) Template 4 pieces.

Tumbling Daisy – Pink (K), cut:

- (16) Template 6 pieces.

Arley Rose – Pink (L), cut:

- (16) Template 2 pieces.
- (16) Template 5 pieces.

Ricardo – Pink (M), cut:

- (16) Template 6 pieces.

Posy Haze – Pink (N), cut:

- (16) Template 1 pieces.

Flowertop Forest – Blue (O), cut:

- (16) Template 3 pieces.

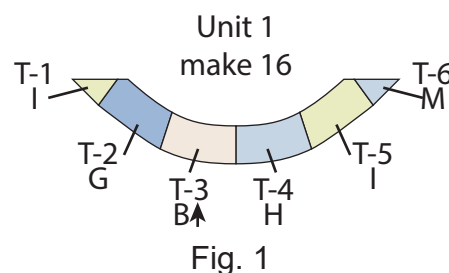
Tumbling Daisy – Pink (Back), cut:

- (2) 68" x WOF strips. Sew the strips together and trim to 68" x 68" for the backing.

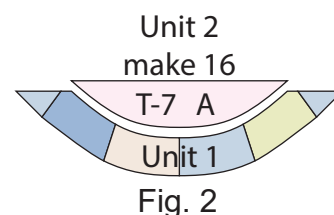
Sewing Instructions:

Sew using a ¼" (0.64cm) seam allowance with right sides together (RST) unless otherwise indicated. Always press towards the darker fabric while assembling, unless otherwise indicated. The arrows in figures represent the fabric print direction. Pay attention to the fabric and unit orientations when assembling the various components.

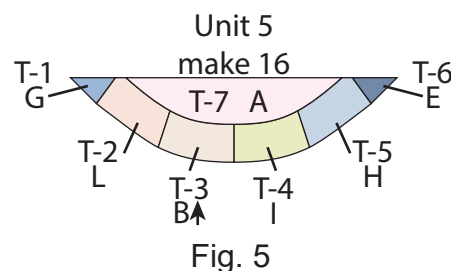
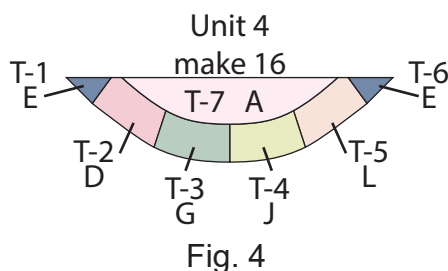
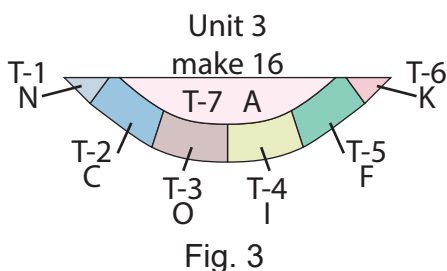
1. Sew together as shown (1) Fabric I Template 1 triangle, (1) Fabric G Template 2 piece, (1) Fabric B Template 3 piece, (1) Fabric H Template 4 piece, (1) Fabric I Template 5 piece and (1) Fabric M Template 6 triangle, in that order from left to right, to make (1) Unit 1 arc (Fig. 1). Repeat to make an additional (15) Unit 1 arcs.



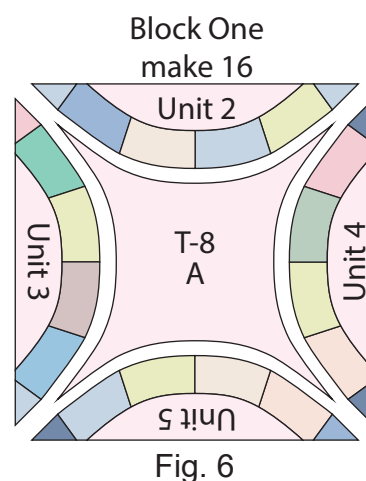
2. Sew (1) Fabric A Template 7 piece to the Unit 1 arc as shown to make (1) Unit 2 segment (Fig. 2). Repeat to make an additional (15) Unit 2 segments.



3. Repeat Steps 1-2 and refer to Figures 3-5 for fabric identification, placement and orientation to make (16) of each unit segment for Unit 3 through Unit 5.



4. Sew (1) Unit 2 segment to the top of (1) Fabric A Template 8 piece. Sew (1) Unit 3 segment to the left side of the Fabric A Template 8 piece. Sew (1) Unit 4 segment to the right side of the Fabric A Template 8 piece. Sew (1) Unit 5 segment to the bottom of the of the Fabric A Template 8 piece to make (1) 14" Block One square (Fig. 6). Repeat to make an additional (15) Block One squares.



5. Sew together (4) Block One squares to make Row One (Fig. 7). Repeat to make Row Two, Row Three and Row Four.

6. Sew together the (4) rows lengthwise and in numerical order from top to bottom, to make the 56 1/2" x 56 1/2" Quilt Center (Fig. 7).

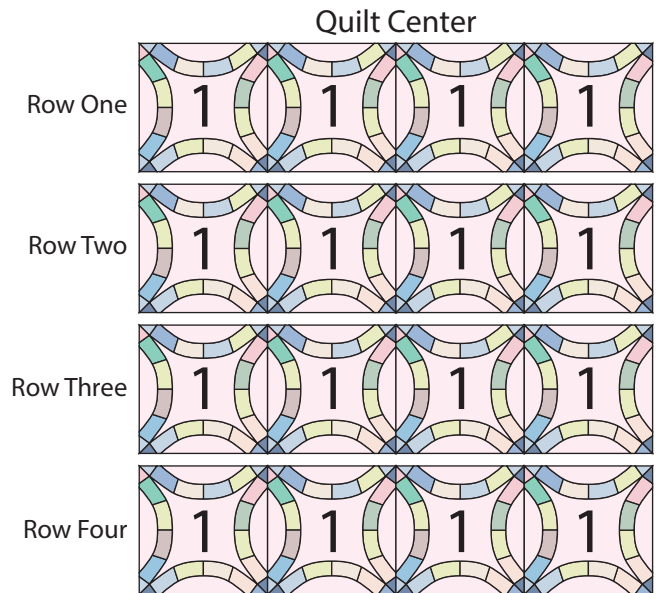


Fig. 7

Quilt Top Assembly: Refer to the Quilt Layout while assembling.

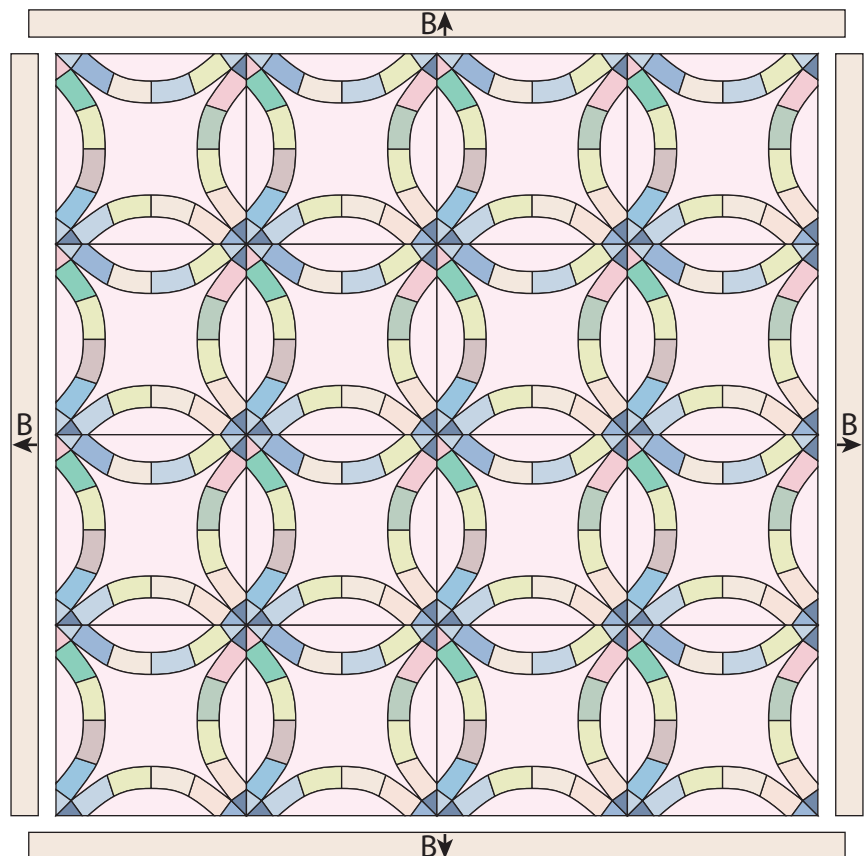
7. Sew together (3) 2 1/2" WOF Fabric B strips end to end with diagonal seams. Measure the sides of the Quilt Center and cut (2) 2 1/2" Fabric B strips to that length. Sew (1) newly cut strip to each side of the Quilt Center.

8. Sew together (4) 2 1/2" WOF Fabric B strips end to end with diagonal seams. Measure the top and bottom of the Quilt Center after adding the side borders. Cut (2) 2 1/2" Fabric B strips to that length and sew the newly cut strips to the top and bottom of the Quilt Center to make the Quilt Top.

9. Layer and quilt as desired.

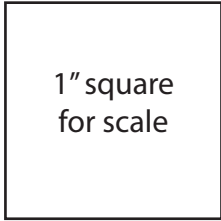
10. Sew the (6) 2 1/2" x WOF Fabric C strips together, end to end with 45-degree seams, to make the binding. Fold this long strip in half lengthwise with wrong sides together and press.

11. Bind as desired.



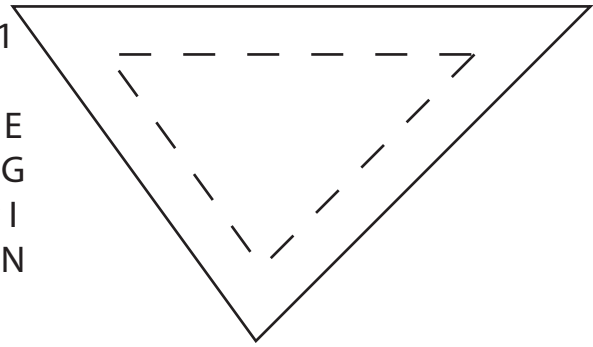
Quilt Layout

100% Reversed Templates



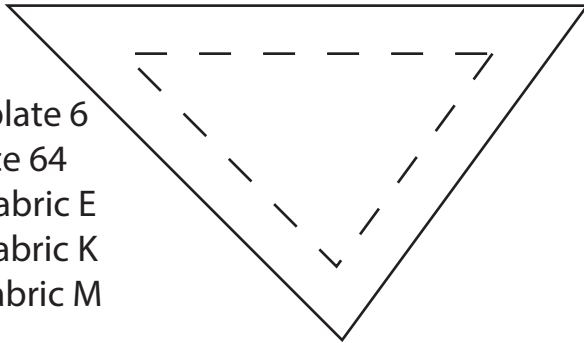
Template 1

Trace 64
(16) Fabric E
(16) Fabric G
(16) Fabric I
(16) Fabric N



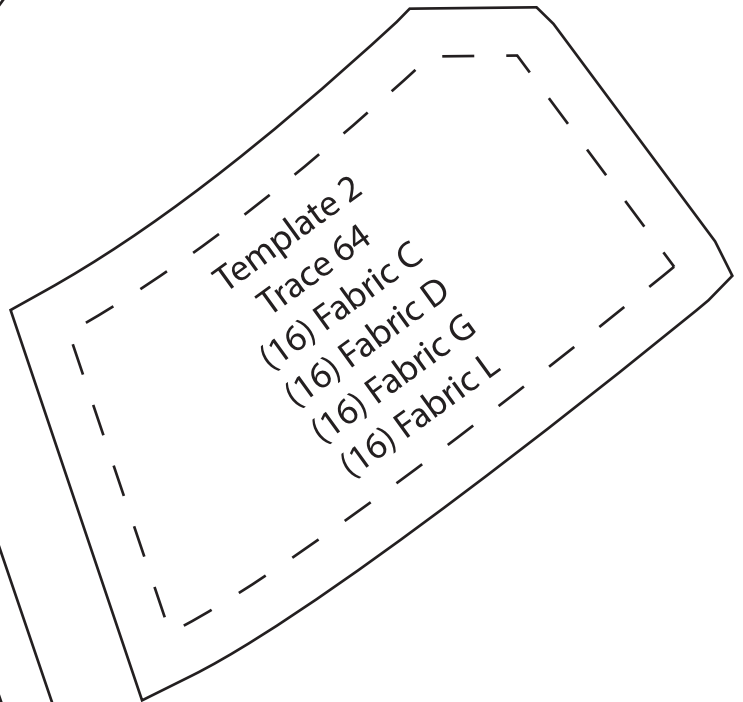
Template 6

Trace 64
(32) Fabric E
(16) Fabric K
(16) Fabric M



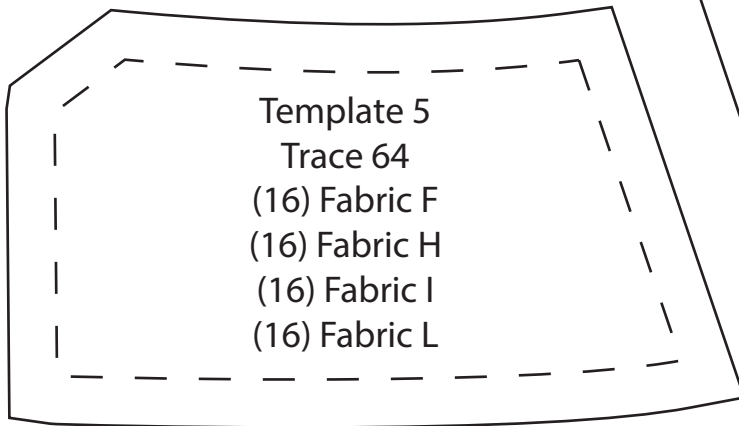
Template 2

Trace 64
(16) Fabric C
(16) Fabric D
(16) Fabric G
(16) Fabric L



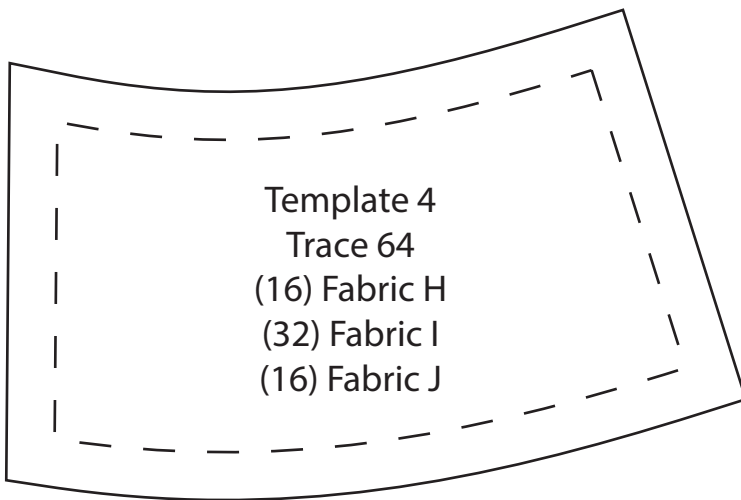
Template 5

Trace 64
(16) Fabric F
(16) Fabric H
(16) Fabric I
(16) Fabric L



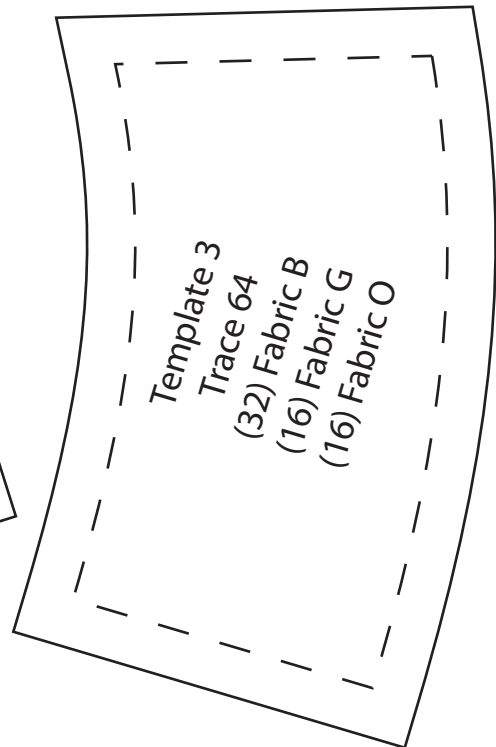
Template 4

Trace 64
(16) Fabric H
(32) Fabric I
(16) Fabric J



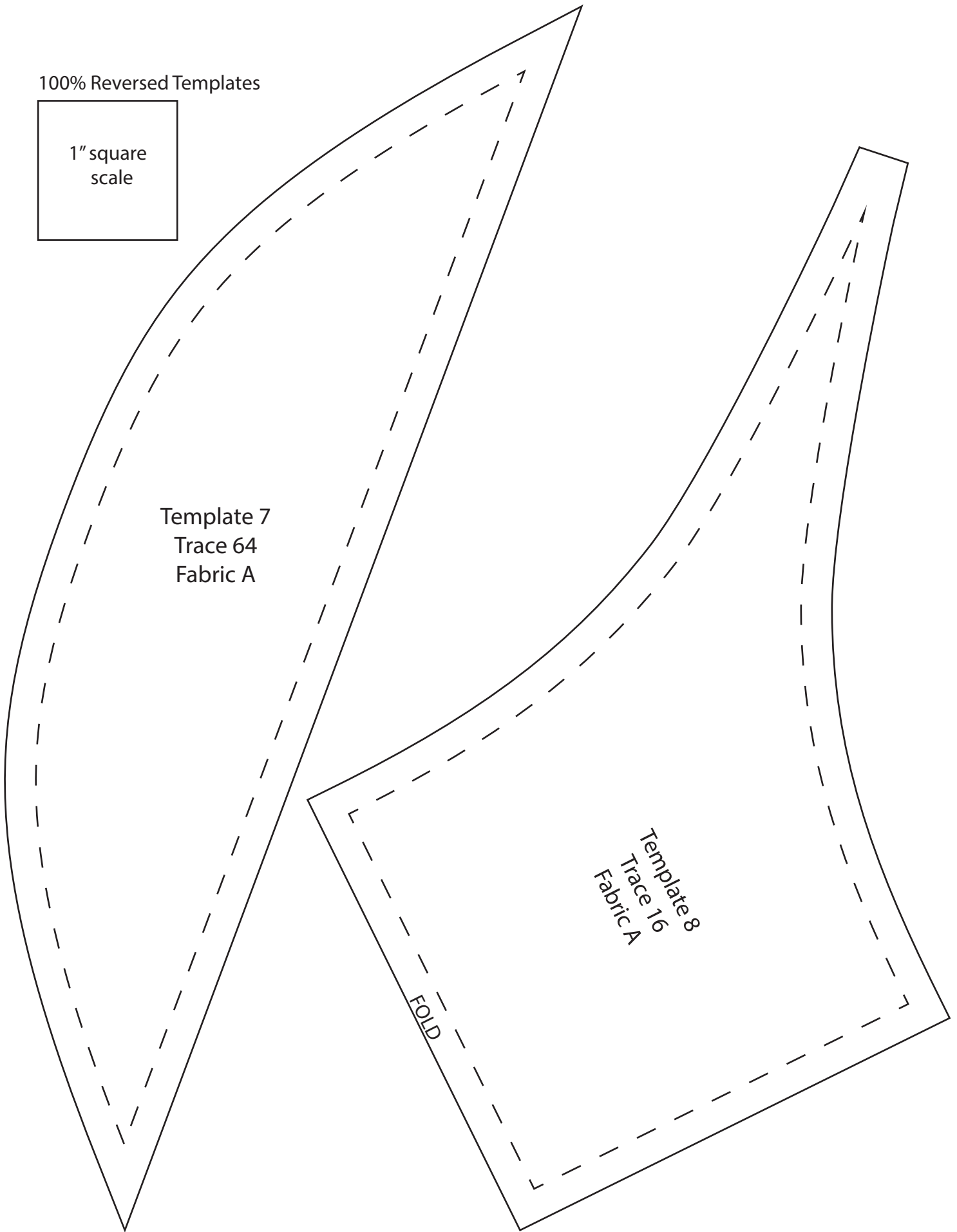
Template 3

Trace 64
(32) Fabric B
(16) Fabric G
(16) Fabric O



100% Reversed Templates

1" square
scale



Template 7
Trace 64
Fabric A

Template 8
Trace 16
Fabric A

FOLD