



House Florals

FABRIC FOR THE HOME

LIBERTY.



House Florals

FABRIC FOR THE HOME

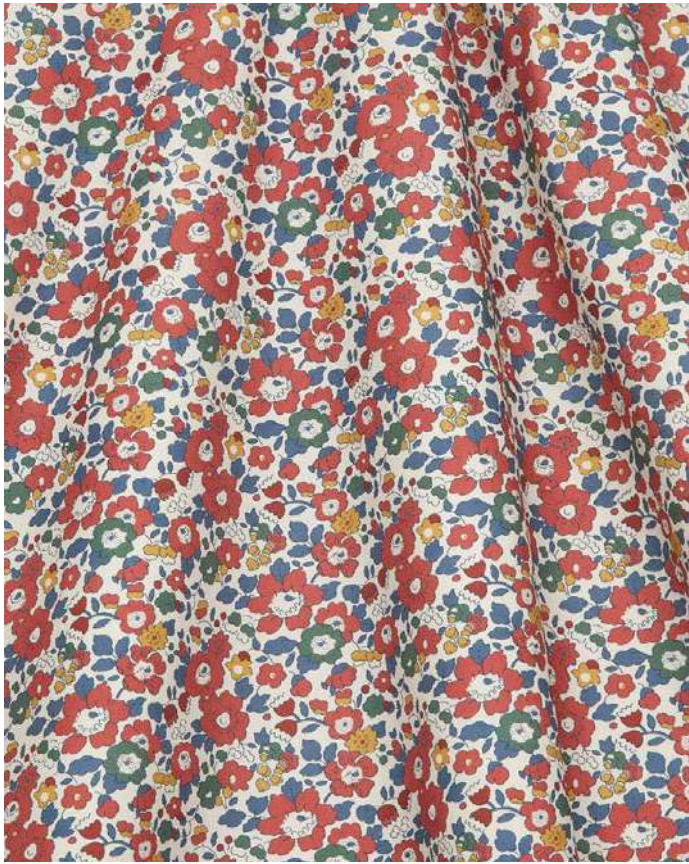
Craft Timeless Classics with Contemporary Charm.

Effortlessly timeless and instantly recognisable, House Florals transports the elegance of Liberty into the heart of your home. Rooted in the classic 1930s florals, the collection captures the essence of meadow flowers and humble blooms, sketched out in pencil from the artists' windows of that era. Beautifully complemented by modern and reworked archival stripes and graphic geometrics, the smaller scale and playful patterns evoke a sense of familiarity, celebrating Liberty's cherished heritage.

Encompassing original artworks and archival discoveries, the collection is set across the Liberty signature colour stories: Lacquer, Jade, Lapis, Pewter, and Lichen. Purposely crafted for layering and pattern play, House Florals comprises eleven floral and five geometric designs that seamlessly merge with nineteen coordinating plains from the Art Colours series. Printed on four lightweight cotton and linen bases, suitable for drapery, accessories, and occasional upholstery, these fabrics showcase a perfect blend of traditional and contemporary aesthetics for the home.

@LIBERTY.1875 | @LIBERTYHOMEANDINTERIORS
INTERIORS@LIBERTYLONDON.COM | LIBERTYFABRIC.COM/HOUSEFLORALS





BETSY FLORA & BETSY BLOOM

Betsy Flora is a larger-scale adaptation of Liberty's much-loved Betsy, initially crafted in 1933. This timeless classic has been rendered in a spectrum of colours over the years and remains one of Liberty's most widely recognised and cherished prints. A true icon in Liberty's history of design.

Betsy Bloom is a modern rendition of the beloved Betsy, expertly resized and recoloured into a captivating two-tone pattern by the design studio. Meticulously redrawn with Liberty's signature fine outline, Betsy Bloom's monochrome, stylised flowers create a distinct aesthetic, offering a fresh and contemporary appeal to your space.

@LIBERTY.1875 | @LIBERTYHOMEANDINTERIORS
INTERIORS@LIBERTYLONDON.COM | LIBERTYFABRIC.COM/HOUSEFLORALS





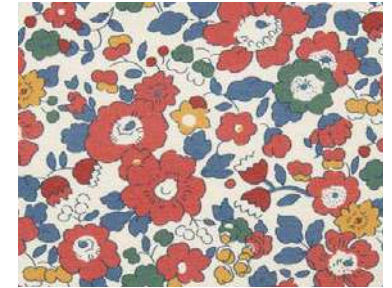
BETSY FLORA
ROBIN'S EGG
08802303B



BETSY FLORA
SLIPPER
08802303L



BETSY FLORA
RED LAC
08802303E



BETSY FLORA
YARROW
08802303A



BETSY BLOOM
SALVIA
08802304F



DESIGN NAME: BETSY FLORA & BETSY BLOOM
MARTINDALE: 12,000
FABRIC COMPOSITION: 100% COTTON

Please refer to fabric for true representation of colour

36

1957 50% wool light yellow
1970 100% wool

ORIGINAL

5% TAUPHONINE BROWN
[Color swatch]

5% CHLORAZA BROWN
[Color swatch]

5% SUPRANIL BROWN R
[Color swatch]

5% QUINACRYL BROWN B
[Color swatch]

5% PARANIL DIRECT BROWN G
[Color swatch]

5% ANTHRACEN BROWN B
[Color swatch]

5% GENZO BROWN R EXTRA
[Color swatch]

ORIGINAL

5% MAONIL BROWN
[Color swatch]

5% SUPRANIL BROWN R
[Color swatch]

5% SUPRANIL BROWN R
[Color swatch]

5% SUPRANIL BROWN R
[Color swatch]

5% SUPRANIL BROWN R
[Color swatch]

5% SUPRANIL BROWN R
[Color swatch]

5% SUPRANIL BROWN R
[Color swatch]

5% SUPRANIL BROWN R
[Color swatch]





THROPE HOUSE

Thorpe House is a timeless homage to artist John Hall Thorpe, whose paintings from the early 1900s inspired this design. Reminiscent of Liberty's 1930s florals prints, the Tana Lawn™ cotton classic, Thorpe, was skilfully created as a colourful, repeating design by the Liberty design studio in 1968. Now reimagined for the home, Thorpe House has been redrawn to a larger, more playful scale offering an interplay of pattern and form suited to modern spaces.

@LIBERTY.1875 | @LIBERTYHOMEANDINTERIORS
INTERIORS@LIBERTYLONDON.COM | LIBERTYFABRIC.COM/HOUSEFLORALS





THORPE HOUSE
LAPIS
08792301C



THORPE HOUSE
SLIPPER
08792301L



THORPE HOUSE
PURSLANE
08792301U



THORPE HOUSE
MADDER
08792301E



DESIGN NAME: THORPE HOUSE
MARTINDALE: 12,000
FABRIC COMPOSITION: 100% LINEN

Please refer to fabric for true representation of colour





when ordering

LONDON

837	Red
ES09L	Red
81c	Red
12x16	Orange
D.C.608	Yellow
	Light Brown
Liberty	Green
	Black

N 8186

LIBERTY.

THORPE H.



EMPRESS VINE

Created for Liberty in 1964, this charming trailing floral pattern features stylised cherry blossom flowers, blooming buds, and colourful carnations. Arranged in perfect harmony, Empress Vine evokes a sense of subtle movement amongst the delicate branches.

@LIBERTY.1875 | @LIBERTYHOMEANDINTERIORS
INTERIORS@LIBERTYLONDON.COM | LIBERTYFABRIC.COM/HOUSEFLORALS





EMPRESS VINE
FLAX FLOWER
08812301S



EMPRESS VINE
INK
08812301D



EMPRESS VINE
BRINJAL
08812301Q



EMPRESS VINE
LACQUER
08812301E



EMPRESS VINE
FENNEL
08812301G



DESIGN NAME: EMPRESS VINE
MARTINDALE: 30,000
FABRIC COMPOSITION: 100% COTTON

Please refer to fabric for true representation of colour



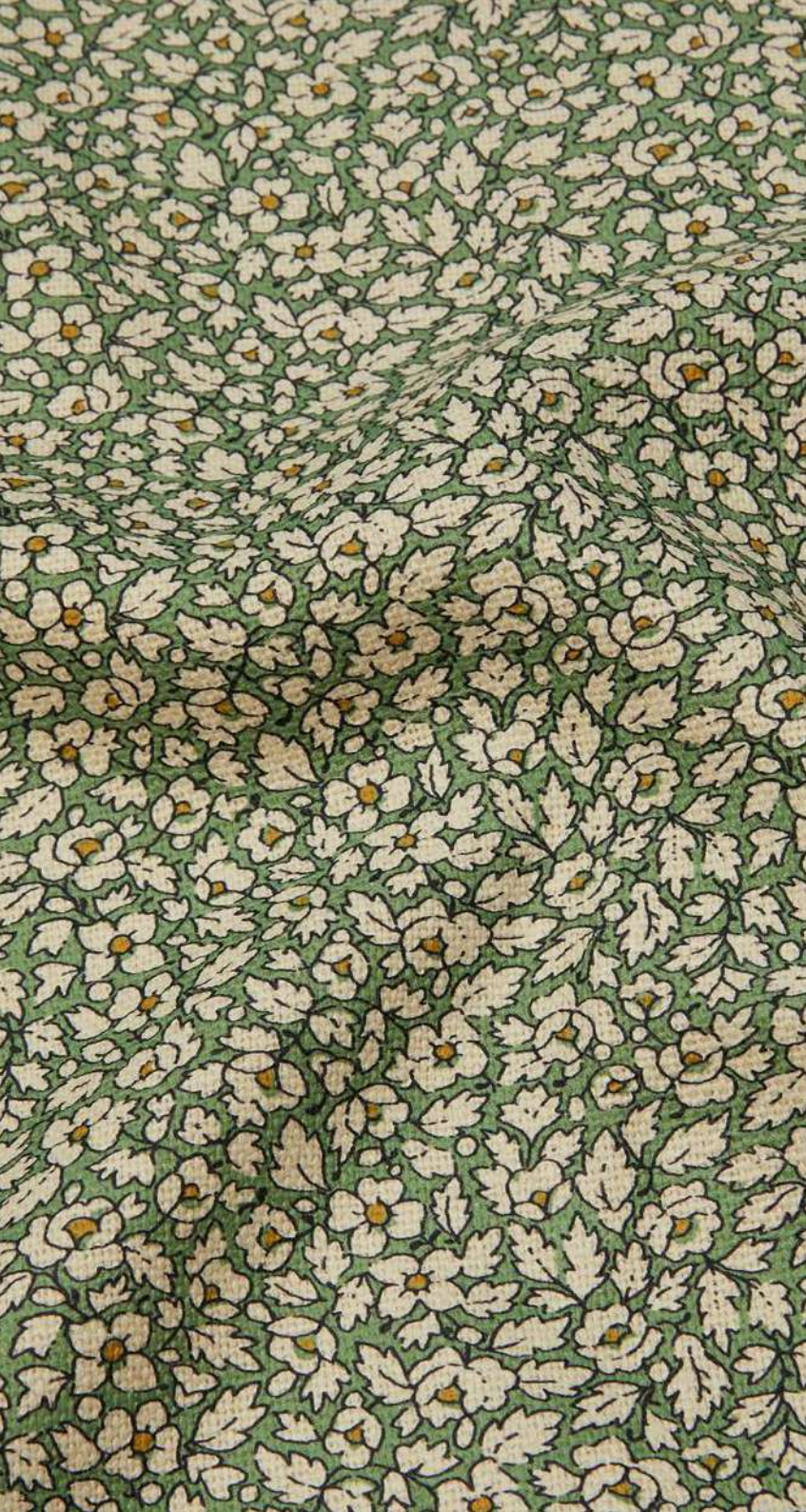


FEATHER PETALS

An adaptation of one of Liberty's most versatile classics, Feather Petals' all-over print is reminiscent of the 1930s style of Liberty designs. Reimagined by the design studio into a sophisticated and minimalist two-tone print, this design is ideal for contemporary living spaces.

@LIBERTY.1875 | @LIBERTYHOMEANDINTERIORS
INTERIORS@LIBERTYLONDON.COM | LIBERTYFABRIC.COM/HOUSEFLORALS

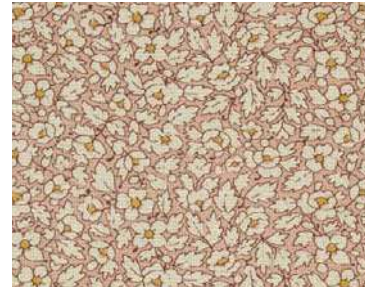




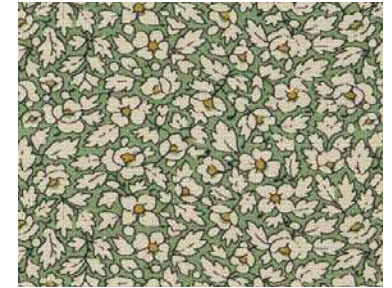
FEATHER PETALS
LAPIS
08792302C



FEATHER PETALS
OINTMENT
08792302L



FEATHER PETALS
ARTICHOKE
08792302Y



FEATHER PETALS
FENNEL
08792302G



FEATHER PETALS
RED LAC
08792302E



DESIGN NAME: FEATHER PETALS
MARTINDALE: 12,000
FABRIC COMPOSITION: 100% LINEN

Please refer to fabric for true representation of colour



WILTSHIRE BLOSSOM

Wiltshire Blossom is a contemporary reworking of an iconic 1933 leaf-and-berry Liberty print. Carefully repainted and re-engineered for House Florals, this contemporary furnishing fabric design provides beautiful tactility and clarity of print mark for a timeless and elegant feel.

@LIBERTY.1875 | @LIBERTYHOMEANDINTERIORS
INTERIORS@LIBERTYLONDON.COM | LIBERTYFABRIC.COM/HOUSEFLORALS





WILTSHIRE BLOSSOM
FLAX FLOWER
08832301S



WILTSHIRE BLOSSOM
SALVIA
08832301F



WILTSHIRE BLOSSOM
YARROW
08832301A



WILTSHIRE BLOSSOM
LICHEN
08832301Y



WILTSHIRE BLOSSOM
FENNEL
08832301G



DESIGN NAME: WILTSHIRE BLOSSOM
MARTINDALE: 18,000
FABRIC COMPOSITION: 100% COTTON

Please refer to fabric for true representation of colour



N 5303

FAST CO

N 5304

N 5305

N 5306

N 5309

quote number when ordering

LIBERTY.
WILTSHIRE B

yard





FELDA WILD

Delicately painted in soft watercolours, Felda Wild showcases a romantic and harmonious array of irises, poppies, and daisies. Capturing the essence of a serene country garden, this selection of meadow flowers offers a scene of tranquillity.

@LIBERTY.1875 | @LIBERTYHOMEANDINTERIORS
INTERIORS@LIBERTYLONDON.COM | LIBERTYFABRIC.COM/HOUSEFLORALS





FELDA WILD
LAPIS
08802305C



FELDA WILD
DRAGONFLY
08802305Q



FELDA WILD
SLIPPER
08802305L



DESIGN NAME: FELDA WILD
MARTINDALE: 12,000
FABRIC COMPOSITION: 100% COTTON

Please refer to fabric for true representation of colour





MITSI BLOSSOM

Mitsi was initially designed by Gillian Farr, a member of the design studio during the 1950s. Paying homage to Liberty's historical appreciation for Japanese design motifs, Mitsi Blossom elegantly showcases a captivating all-over print of cherry blossom flowers.





MITSI BLOSSOM
BUNTING
08832303S



MITSI BLOSSOM
ROBIN'S EGG
08832303B



MITSI BLOSSOM
SLIPPER
08832303L



MITSI BLOSSOM
YARROW
08832303A



MITSI BLOSSOM
JADE
08832303I



DESIGN NAME: MITSU BLOSSOM
MARTINDALE: 18,000
FABRIC COMPOSITION: 100% COTTON

Please refer to fabric for true representation of colour



LIBERTY.

MITSI BLOSSOM

YARRO





POPPY MEADOWFIELD

Poppy Meadowfield is a refreshing take on the beloved Poppy & Daisy print. Redrawn and rebalanced for contemporary home interiors, this design's delicate outlines and vibrant colour palette mark this as an unmistakably Liberty pattern. Reimagined in a myriad of colourways throughout the years, this timeless floral remains one of Liberty's most cherished prints.





POPPY MEADOWFIELD
DRAGONFLY
08802301Q



POPPY MEADOWFIELD
SCARAB
08802301J



POPPY MEADOWFIELD
LACQUER
08802301E



POPPY MEADOWFIELD
LICHEN
08802301Y



POPPY MEADOWFIELD
BULLFINCH
08802301F



DESIGN NAME: POPPY MEADOWFIELD
MARTINDALE: 12,000
FABRIC COMPOSITION: 100% COTTON

Please refer to fabric for true representation of colour





POPPY GRACE

Poppy Grace is a one-colour version of Poppy Meadowfield, a modern reimagining of a cherished archival print circa 1910. Carefully crafted into an all-over floral design with soft, contemporary-coloured grounds, the delicate outlines and tranquil colour palette provide a quintessentially Liberty feel.





POPPY GRACE
FLAX FLOWER
08832302S



POPPY GRACE
FLAX
08832302M



POPPY GRACE
SALVIA
08832302F



POPPY GRACE
YARROW
08832302A



POPPY GRACE
SLIPPER
08832302L



DESIGN NAME: POPPY GRACE
MARTINDALE: 18,000
FABRIC COMPOSITION: 100% COTTON

Please refer to fabric for true representation of colour





SHEPHERDLY FLOWERS

An original design hand-drawn in pencil and brought to life with gouache, Shepherdly Flowers was inspired by the flowers adorning the Regent Street entrance to the iconic Liberty flagship store. Elegantly transformed into a stylised floral paisley, this all-over meadow layout offers a celebratory interpretation of wildflowers and plants.

@LIBERTY.1875 | @LIBERTYHOMEANDINTERIORS
INTERIORS@LIBERTYLONDON.COM | LIBERTYFABRIC.COM/HOUSEFLORALS





SHEPHERDLY FLOWERS
LAPIS
08802302C



SHEPHERDLY FLOWERS
LICHEN
08802302Y



SHEPHERDLY FLOWERS
LACQUER
08802302E



DESIGN NAME: SHEPHERDLY FLOWERS
MARTINDALE: 12,000
FABRIC COMPOSITION: 100% COTTON

Please refer to fabric for true representation of colour



SHEPHERDLY FLOWERS

LIBERTY.





ART STRIPE

Crafted originally between 1925 and 1927, Art Stripe is a classic stripe design discovered in the archive and carefully reconsidered for interior spaces today. Offered in three rich colourways, this print draws inspiration from the vibrant colour palette of the 1920s period, providing an attractive blend of contemporary hues with archival appeal.





ART STRIPE
JADE
08792303I



ART STRIPE
LACQUER
08792303E



ART STRIPE
INK
08792303D



DESIGN NAME: ART STRIPE

MARTINDALE: 12,000

FABRIC COMPOSITION: 100% LINEN

Please refer to fabric for true representation of colour





PARK STRIPE & REGENT STRIPE

Park Stripe is a beautifully refined stripe design derived from House Florals' Art Stripe. Offered in five sophisticated colourways, this two-tone vertical stripe mirrors Liberty's signature colour palette. Park Stripe elevates the atmosphere of any space.

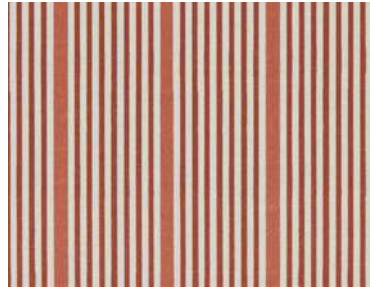
Inspired by Art Stripe's timeless composition, Regent Stripe pays homage to an era of grace and style, infusing contemporary living spaces with a touch of sophistication. With a selection of thin vertical stripes coloured in a tonal spectrum, crafted to create an illusion of light and dark, Regent Stripe seamlessly blends 1920s elegance with a modern aesthetic for a refined atmosphere.

@LIBERTY.1875 | @LIBERTYHOMEANDINTERIORS
INTERIORS@LIBERTYLONDON.COM | LIBERTYFABRIC.COM/HOUSEFLORALS





PARK STRIPE
GALAH PINK
08812305O



PARK STRIPE
FLAX
08812305M



PARK STRIPE
SALVIA
08812305F



PARK STRIPE
PURSLANE
08812305U



PARK STRIPE
YARROW
08812305A



REGENT STRIPE
LAPIS
08812304C



REGENT STRIPE
FERN PINK
08812304H



DESIGN NAME: PARK STRIPE & REGENT STRIPE

MARTINDALE: 30,000

FABRIC COMPOSITION: 100% COTTON

Please refer to fabric for true representation of colour



TAPESTRY TRELLIS

Created for a simple cotton dress print in 1968, Tapestry Trellis is a captivating geometric design beautifully complemented by delightful pops of tiny, coloured squares. Tapestry Trellis' diagonal check is brought to life in an all-over repeat, evoking the charm of graphic tile patterns.

@LIBERTY.1875 | @LIBERTYHOMEANDINTERIORS
INTERIORS@LIBERTYLONDON.COM | LIBERTYFABRIC.COM/HOUSEFLORALS





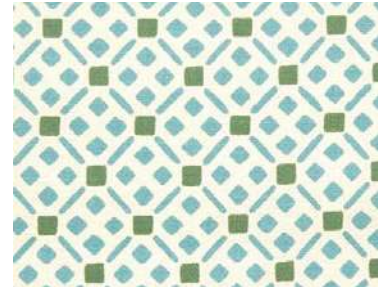
TAPESTRY TRELLIS
LAPIS
08812303C



TAPESTRY TRELLIS
FLAX
08812303M



TAPESTRY TRELLIS
PURSLANE
08812303U



TAPESTRY TRELLIS
YARROW
08812303A



TAPESTRY TRELLIS
ROBIN'S EGG
08812303B



DESIGN NAME: TAPESTRY TRELLIS

MARTINDALE: 30,000

FABRIC COMPOSITION: 100% COTTON

Please refer to fabric for true representation of colour



SCALLOP SPOT

Inspired by the iconic markings of regal peacock feathers, this all-over geometric design was originally drawn with the decisive mark-making of oil pastels, providing a hand-drawn aesthetic to an otherwise graphic print.

@LIBERTY.1875 | @LIBERTYHOMEANDINTERIORS
INTERIORS@LIBERTYLONDON.COM | LIBERTYFABRIC.COM/HOUSEFLORALS

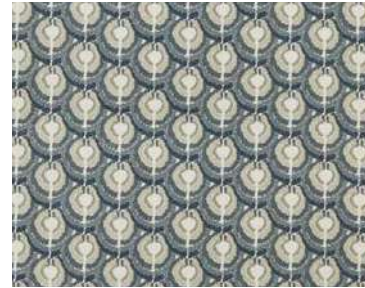




SCALLOP SPOT
LAPIS
08812302C



SCALLOP SPOT
SMALT BLUE
08812302P



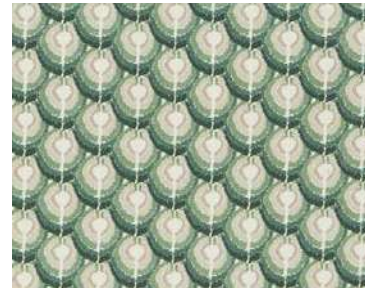
SCALLOP SPOT
ROBIN'S EGG
08812302B



SCALLOP SPOT
FENNEL
08812302A



SCALLOP SPOT
JADE
08812302I



DESIGN NAME: SCALLOP SPOT
MARTINDALE: 30,000
FABRIC COMPOSITION: 100% COTTON

Please refer to fabric for true representation of colour



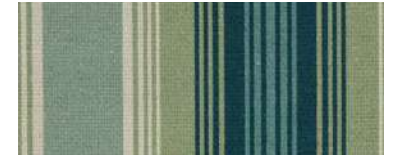
SUGGESTED FABRIC COMBINATIONS



THORPE HOUSE
MADDER / 08792301E



ART STRIPE
JADE / 08792303I



BETSY FLORA
RED LAC / 08802303E



DUNCOMBE
GALAH PINK / 08372201O



DUNCOMBE
PURSLANE / 08372201U



THORPE HOUSE
PURSLANE / 08792301U



SUGGESTED FABRIC COMBINATIONS



SHEPHERDLY FLOWERS
LICHEN / 08802302Y



BETSY FLORA
SLIPPER / 08802303L



TAPESTRY TRELLIS
ROBIN'S EGG / 08812303B



REGENT STRIPE
FERN PINK / 08812304H



WILTSHIRE BLOSSOM
FENNEL / 08832301G



SCALLOP SPOT
ROBIN'S EGG / 08812302B



SUGGESTED FABRIC COMBINATIONS



SHEPHERDLY FLOWERS
LACQUER / 08802302E



FEATHER PETALS
RED LAC / 08792302E



POPPY MEADOWFIELD
DRAGONFLY / 08802301Q



DUNCOMBE
SLOE / 08382201V



FELDA WILD
DRAGONFLY / 08802305Q



HELIGAN
NETTLE / 08362201I



SUGGESTED FABRIC COMBINATIONS



EMPRESS VINE
INK / 08812301D



THORPE HOUSE
LAPIS / 08792301C



POPPY GRACE
FLAX / 08832302M



MITSI BLOSSOM
YARROW / 08832303A



FEATHER PETALS
LAPIS / 08792302C



ART STRIPE
INK / 08792303D



FABRIC - PATTERN LIBRARY

THORPE HOUSE Thorpe House is a timeless homage to artist John Hall Thorpe, whose paintings from the early 1900s inspired this design. Reminiscent of Liberty's 1930s florals prints, the Tana Lawn™ cotton classic, Thorpe, was skillfully created as a colourful, repeating design by the Liberty design studio in 1968. Now reimagined for the home, Thorpe House has been redrawn to a larger, more playful scale offering an interplay of pattern and form suited to modern spaces.

WILTSHIRE BLOSSOM Wiltshire Blossom is a contemporary reworking of an iconic 1933 leaf-and-berry Liberty print. Carefully repainted and re-engineered for House Florals, this contemporary furnishing fabric design provides beautiful tactility and clarity of print mark for a timeless and elegant feel.

FEATHER PETALS An adaptation of one of Liberty's most versatile classics, Feather Petals' all-over print is reminiscent of the 1930s style of Liberty designs. Reimagined by the design studio into a sophisticated and minimalist two-tone print, this design is ideal for contemporary living spaces.

POPPY MEADOWFIELD Poppy Meadowfield is a refreshing take on the beloved Poppy & Daisy print. Redrawn and rebalanced for contemporary home interiors, this design's delicate outlines and vibrant colour palette mark this as an unmistakably Liberty pattern. Reimagined in a myriad of colourways throughout the years, this timeless floral remains one of Liberty's most cherished prints.

POPPY GRACE Poppy Grace is a one-colour version of Poppy Meadowfield, a modern reimagining of a cherished archival print circa 1910. Carefully crafted into an all-over floral design with soft, contemporary-coloured grounds, the delicate outlines and tranquil colour palette provide a quintessentially Liberty feel.

EMPRESS VINE Created for Liberty in 1964, this charming trailing floral pattern features stylised cherry blossom flowers, blooming buds, and colourful carnations. Arranged in perfect harmony, Empress Vine evokes a sense of subtle movement amongst the delicate branches.

BETSY FLORA Betsy Flora is a larger-scale adaptation of Liberty's much-loved Betsy, initially crafted in 1933. This timeless classic has been rendered in a spectrum of colours over the years and remains one of Liberty's most widely recognised and cherished prints. A true icon in Liberty's history of design.

BETSY BLOOM Betsy Bloom is a modern rendition of the beloved Betsy, expertly resized and recoloured into a captivating two-tone pattern by the design studio. Meticulously redrawn with Liberty's signature fine outline, Betsy Bloom's monochrome, stylised flowers create a distinct aesthetic, offering a fresh and contemporary appeal to your space.

SHEPHERDLY FLOWERS An original design hand-drawn in pencil and brought to life with gouache, Shepherdly Flowers was inspired by the flowers adorning the Regent Street entrance to the iconic Liberty flagship store. Elegantly transformed into a stylised floral paisley, this all-over meadow layout offers a celebratory interpretation of wildflowers and plants.

FELDA WILD Delicately painted in soft watercolours, Felda Wild showcases a romantic and harmonious array of irises, poppies, and daisies. Capturing the essence of a serene country garden, this selection of meadow flowers offers a scene of tranquillity.

MITSI BLOSSOM Mitsi was initially designed by Gillian Farr, a member of the design studio during the 1950s. Paying homage to Liberty's historical appreciation for Japanese design motifs, Mitsi Blossom elegantly showcases a captivating all-over print of cherry blossom flowers.

THORPE HOUSE
LAPIS



THORPE HOUSE
SLIPPER



THORPE HOUSE
PURSLANE



THORPE HOUSE
MADDER



BETSY FLORA
ROBIN'S EGG



BETSY FLORA
SLIPPER



BETSY FLORA
RED LAC



BETSY FLORA
YARROW



BETSY BLOOM
SALVIA



EMPRESS VINE
FLAX FLOWER



EMPRESS VINE
INK



EMPRESS VINE
BRINJAL



EMPRESS VINE
LACQUER



EMPRESS VINE
FENNEL



FEATHER PETALS
LAPIS



FEATHER PETALS
OINTMENT



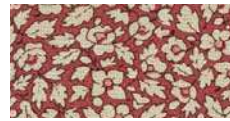
FEATHER PETALS
ARTICHOKE



FEATHER PETALS
FENNEL



FEATHER PETALS
RED LAC



WILTSHIRE BLOSSOM
FLAX FLOWER



WILTSHIRE BLOSSOM
SALVIA



WILTSHIRE BLOSSOM
YARROW



WILTSHIRE BLOSSOM
LICHEN



WILTSHIRE BLOSSOM
FENNEL



FELDA WILD
LAPIS



FELDA WILD
DRAGONFLY



FELDA WILD
SLIPPER



MITSI BLOSSOM
BUNTING



MITSI BLOSSOM
ROBIN'S EGG



MITSI BLOSSOM
SLIPPER



MITSI BLOSSOM
YARROW



MITSI BLOSSOM
JADE



POPPY MEADOWFIELD
DRAGONFLY



POPPY MEADOWFIELD
SCARAB



POPPY MEADOWFIELD
LACQUER



POPPY MEADOWFIELD
LICHEN



POPPY MEADOWFIELD
BULLFINCH



POPPY GRACE
FLAX FLOWER



POPPY GRACE
FLAX



POPPY GRACE
SALVIA



POPPY GRACE
YARROW



POPPY GRACE
SLIPPER



SHEPHERDLY FLOWERS
LAPIS



SHEPHERDLY FLOWERS
LICHEN



SHEPHERDLY FLOWERS
LACQUER



ART STRIPE
JADE



ART STRIPE
LACQUER



ART STRIPE
INK



FABRIC - PATTERN LIBRARY

ART STRIPE Crafted originally between 1925 and 1927, Art Stripe is a classic stripe design discovered in the archive and carefully reconsidered for interior spaces today. Offered in three rich colourways, this print draws inspiration from the vibrant colour palette of the 1920s period, providing an attractive blend of contemporary hues with archival appeal.

REGENT STRIPE Inspired by Art Stripe's timeless composition, Regent Stripe pays homage to an era of grace and style, infusing contemporary living spaces with a touch of sophistication. With a selection of thin vertical stripes coloured in a tonal spectrum, crafted to create an illusion of light and dark, Regent Stripe seamlessly blends 1920s elegance with a modern aesthetic for a refined atmosphere.

PARK STRIPE Park Stripe is a beautifully refined stripe design derived from House Florals' Art Stripe. Offered in five sophisticated colourways, this two-tone vertical stripe mirrors Liberty's signature colour palette. Park Stripe elevates the atmosphere of any space.

TAPESTRY TRELLIS Created for a simple cotton dress print in 1968, Tapestry Trellis is a captivating geometric design beautifully complemented by delightful pops of tiny, coloured squares. Tapestry Trellis' diagonal check is brought to life in an all-over repeat, evoking the charm of graphic tile patterns.

SCALLOP SPOT Inspired by the iconic markings of regal peacock feathers, this all-over geometric design was originally drawn with the decisive mark-making of oil pastels, providing a hand-drawn aesthetic to an otherwise graphic print.

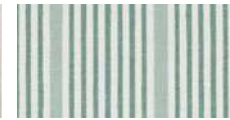
PARK STRIPE
GALAH PINK



PARK STRIPE
FLAX



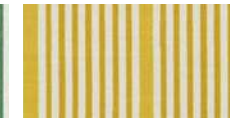
PARK STRIPE
SALVIA



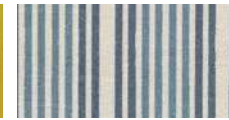
PARK STRIPE
PURSLANE



PARK STRIPE
YARROW



REGENT STRIPE
LAPIS



REGENT STRIPE
FERN PINK



TAPESTRY TRELLIS
LAPIS



TAPESTRY TRELLIS
FLAX



TAPESTRY TRELLIS
PURSLANE



TAPESTRY TRELLIS
YARROW



TAPESTRY TRELLIS
ROBIN'S EGG



SCALLOP SPOT
LAPIS



SCALLOP SPOT
SMALT BLUE



SCALLOP SPOT
ROBIN'S EGG



SCALLOP SPOT
FENNEL



SCALLOP SPOT
JADE

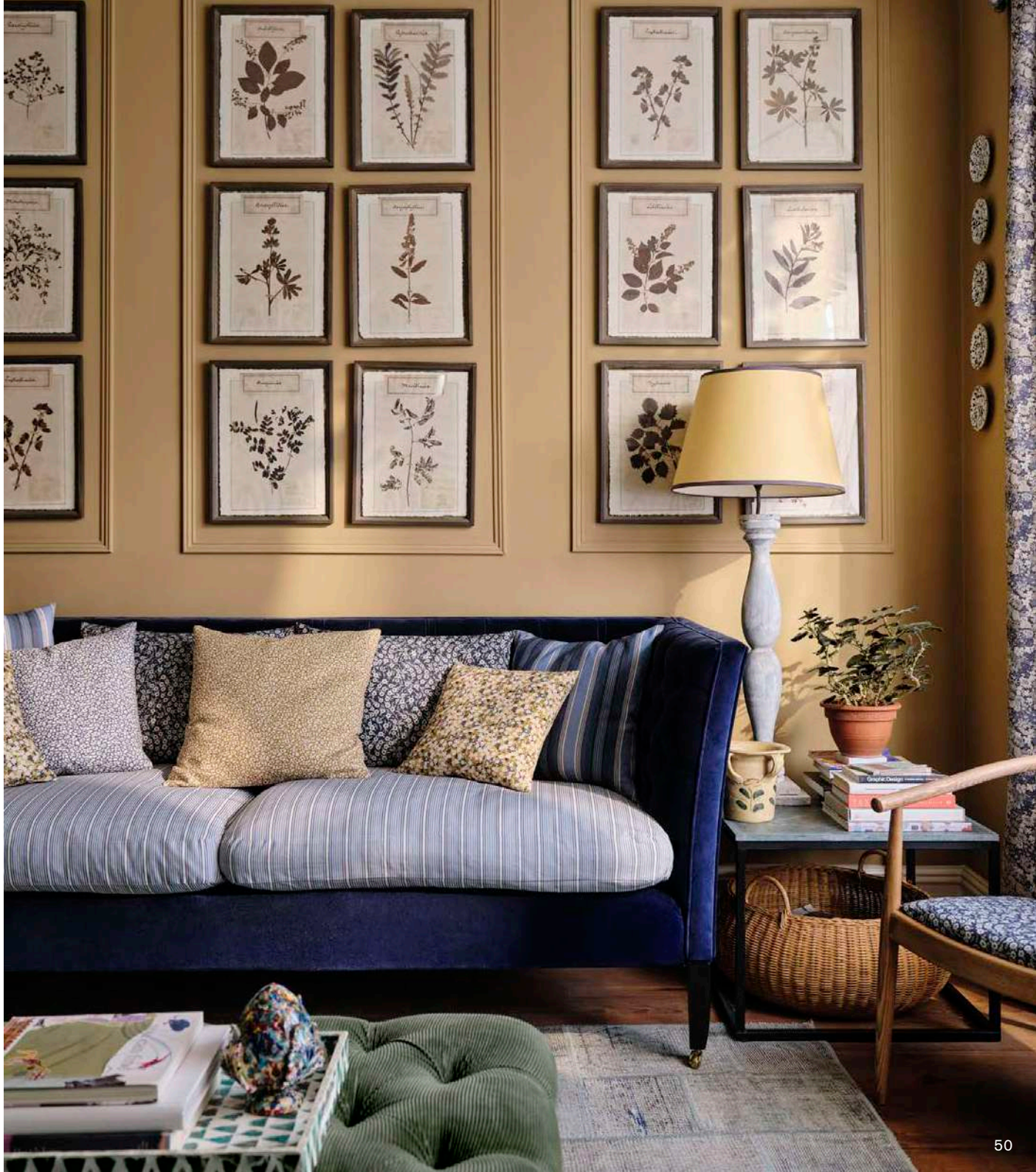


Please note: Please note our fabrics are made from high quality materials. The natural qualities of linen mean that there may be slubs and slight variations in weave. These slight variations may affect the penetration of dye in some places. This is not a defect of the fabric – rather it shows quality and integrity of the natural yarn and printing process. This can be seen on larger pieces and on showroom drapes. Please ask for assistance if you require clarification prior to purchase. In addition, there may be some shade variation from batch to batch. Please order a current stock cutting if you require an exact colour match. Technical specifications are shown on the reverse of each sample.

Copyright: The copyright and any other intellectual property rights in the designs on this fabric belong to Liberty Fabric Ltd. The designs may not be copied, adapted or translated into any other media without the prior written permission of Liberty. Liberty takes the protection of its intellectual property very seriously and will take immediate legal steps to defend its rights in the event of any unauthorised use of its designs.

Testing: In order to comply with various international and national upholstery, flame retardant standards, these high-quality upholstery fabrics may require additional FR treatments. Please refer to information found on sample labels and contact Liberty Fabrics for further information. All fabrics have been tested in accordance with the standards shown on the reverse of each fabric. Technical data sheets and sight of testing certificates can be supplied upon request. Where FR treatment is indicated an additional cost may apply.

Care and Cleaning: We recommend that all velvets and upholstery fabrics are regularly brushed or vacuumed with an upholstery fitting, both to prolong the life of the fabric and to maintain its appearance. Light spot cleaning can be carefully carried out, but we recommend spot testing in a less visible area. Professional dry cleaning as necessary.





With thanks to L.Ercolani for generously providing Liberty with their Love Seat, Butterfly chairs, and Reprise Upholstered chair.

Photography: Ben Anders

LIBERTY.