



Nouveau Shadow

Cushion Pattern

Designed by Suzanne Campion for Liberty Fabrics

FINISHED SIZE 12½" x 18"

Skill Level – Intermediate

This pattern is suited for someone who has English Paper Piecing experience.

NOUVEAU SHADOW CUSHION PATTERN



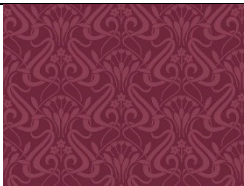




SKILL LEVEL: INTERMEDIATE

This pattern is suited for someone who has English paper piecing experience. This pattern requires an intermediate knowledge of quilting techniques and terminology. The quilt and block diagrams portrayed are virtual images. The layout and look of your project may differ when using actual fabric.

Equipment Requirements

Sewing Supplies	Sewing Equipment
<p>EPP Papers for Cushion Front</p> <ul style="list-style-type: none">• 63 x 1 ½” Honeycombs - 60° <p>Acrylic Template with 3/8” seam allowance</p> <p>Recommended</p> <p>EPP Papers Set & Acrylic Template</p> <p>Available from www.suzannecampion.co.uk</p> <p>Template Plastic is required if you wish to trace the fabric cutting templates on page 11.</p>	<p>Hand sewing needles - size 10 applique or milliners/straws</p> <p>Cotton thread - 50 wt. or finer</p> <p>Fabric glue pen for basting</p> <p>Straight pins, scissors, fabric marking pen / pencil, fabric clips, thread conditioner, thimble</p> <p>Rotary cutting equipment - mat, ruler, cutter</p> <p>Sewing machine with ¼” foot and a walking foot (if machine quilting)</p>
Cushion Pad / Pillow – 32cm x 52cm	
Cotton Wadding / Batting – 40cm x 55cm	
Calico / Lining for front panel – 40cm x 55cm	

Fabric Requirements

KEY	Liberty Nouveau Shadow Fabrics as used on pattern cover			Cutting Requirements
A		Nouveau Shadow Fig Item Code: 01667481 A	½ yd x WOF (18" x 44")	<u>EPP</u> 13 x Honeycombs <u>Binding</u> 2 x 2 ¼" x 44" (WOF) strips
B		Nouveau Shadow Pumpkin Spice Item Code: : 01667480 A	1x Fat Quarter (18" x 22")	<u>EPP</u> 12 x Honeycombs
C		Nouveau Shadow Chalk Red Item Code: : 01667477 A	1x Fat Quarter (18" x 22")	<u>EPP</u> 13 x Honeycombs <u>Cushion Back Feature Panel</u> 1 x 2 ½" x 18½" strip
D		Nouveau Shadow Soft Coral Item Code: : 01667475 A	1x Fat Quarter (18" x 22")	<u>EPP</u> 12 x Honeycombs
E		Nouveau Shadow Fawn Item Code: : 01667470 A	½ yd x WOF (18" x 44")	<u>EPP</u> 13 x Honeycombs <u>Cushion Back Panels</u> 2 x 9" x 18½" strips

Making Instructions for EPP Front Panel

For best results, press fabric before marking shapes and cutting.

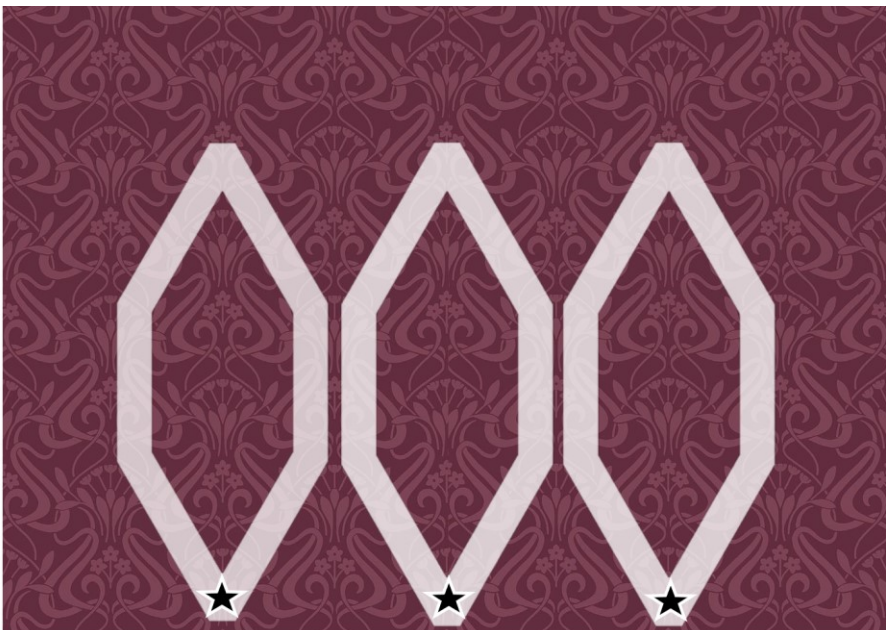
WS – Wrong side of fabric **RS** – Right side of fabric

Fussy Cutting Layout

This cushion design is created by using just one honeycomb shape.

The layout below enables you to fussy cut the Nouveau Shadow print that was used on the pattern cover. All the honeycombs were fussy cut from the same section of the print for all five colourways.

I would recommend cutting your honeycombs in your fabrics in the same direction for best effect.

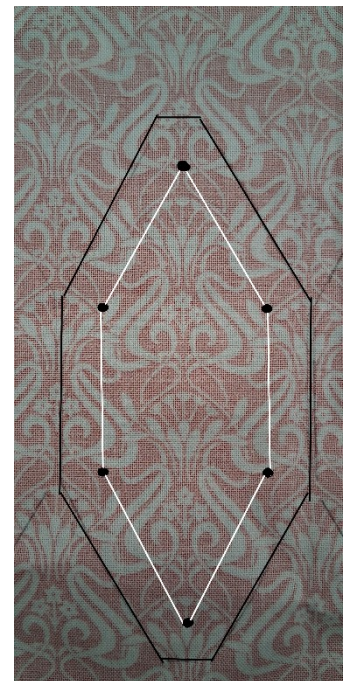


On the wrong side of the fabric, position the template as required and draw around the outer edges: this will be your cutting line.

Mark the inside points to enable you to place the paper piece accurately for fussy cutting. There are also guidelines marked to help centre your design.

The templates have a 3/8" seam allowance. I find this gives a bit more wiggle room when wrapping over your EPP paper pieces.

Ensure you repeat the same process when fussy cutting each shape.



Basting fabric around paper pieces

Personally, I prefer the speed and accuracy from glue basting; however, traditional thread basting can be used if preferred.

Top Tip - wrap the fabric around your pieces in the same direction to ensure that the pieces will nest together and make it easier for you when sewing together and allow the pieces to lay flat.



Stitching the fabric covered EPP Shapes

Once you have cut and basted the EPP shapes they are ready for stitching together, using a whip stitch.

Place your shapes right sides together, a binding clip may be helpful to keep shapes lined up.

Using a quilters knot, begin your line of sewing with a secured / anchor stitch.

Top Tip – Place your needle in at 90° as this will make sure minimal stitching shows on the right side.

When you reach the end of the shape edges you are stitching, finish with a few securing stitches.

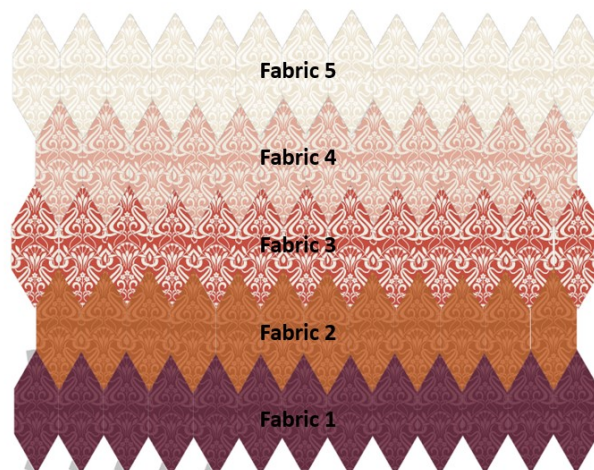
This technique will be used to stitch all the honeycombs to create the EPP panel for this cushion.



Assembling the honeycomb EPP panel

The honeycomb shapes are stitched together as per the layout on the right.

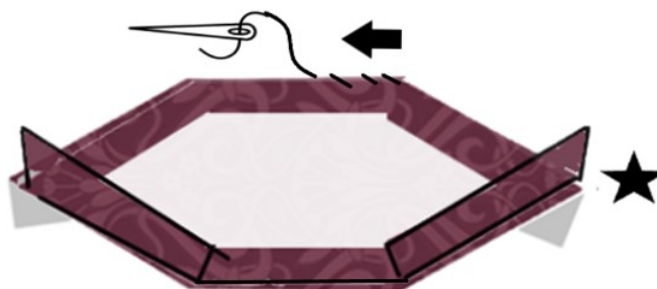
I recommend starting from the bottom row, Fabric 1 and working your way up the design. This will in turn allow you to start removing papers sooner and enable the panel to be more lightweight and manageable whilst assembling.



1. Begin by stitching 6 pairs of honeycombs for all 5 fabrics.

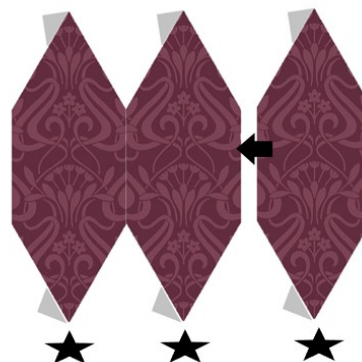
(You will have a single honeycomb left in Fabrics 1, 3 and 5)

Top Tip – When placing the honeycombs **RS** together, ensure if you have used a directional print that the base of the honeycomb, illustrated here with a star, is to the right. Stitch along the edge in the direction of the arrow.

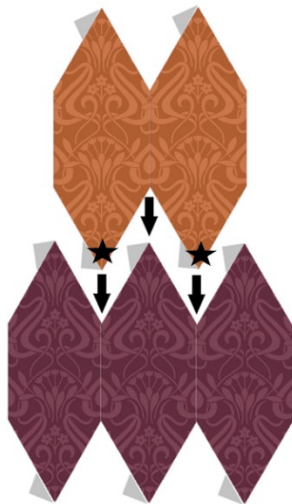


2. Once all the pairs have been stitched you can begin to assemble the panel starting from the bottom row with Fabric 1.

Add the single honeycomb to a pair with **RS** together.



3. Add a pair of Fabric 2 honeycombs as shown to the top of the Fabric 1 honeycombs.

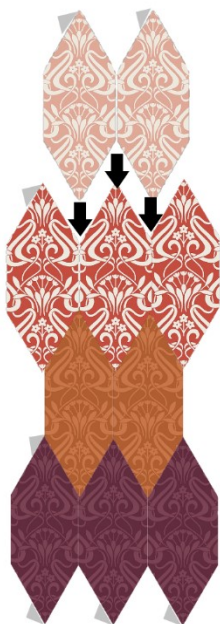


4. Add the single honeycomb to a pair of Fabric 3 honeycombs with RS together, before stitching into place on top of Fabric 2. See diagram on the right.



5. Next, stitch a pair of Fabric 4 honeycombs into place on top of Fabric 3 centrally.

6. Add the single honeycomb to a pair of Fabric 5 honeycombs with RS together, before stitching into place on top of Fabric 4. See diagram on the right.



7. I would recommend that you start to remove papers as you work along the cushion front panel. This will reduce the weight of the panel, making it easier to manipulate whilst folding to stitch the points of the honeycomb together.

I press with a dry iron before removing papers.

The diagram right shows the papers to be removed at this stage.



8. You will now continue to add pairs of honeycombs from the base to the top of the cushion panel, starting with Fabric 1.



9. Once you have stitched all your honeycomb shapes into place, press the panel, remove any papers and press once more.



10. Now you can add quilting to your cushion front.

Layer your quilt sandwich by placing your cushion front backing/lining fabric **RS** down. Then place your cotton wadding down and finally place your EPP front panel **RS** up.

11. Baste all layers with quilters safety pins, basting spray or hand basting.
12. Quilt as desired by machine, hand or a combination of both.

I stitched $\frac{1}{4}$ " below the top points of the honeycombs.

There is no need to do this for Fabric 5 honeycombs as these points will be trimmed away!

13. Trim and square the cushion front panel as shown below.
The dotted line will be the stitch line, cut a $\frac{1}{4}$ " away from this as marked by the red line.

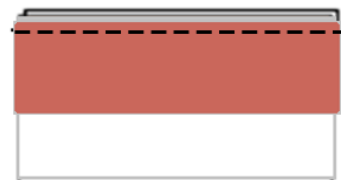


14. Stitch around outer edge about one eighth of an inch from the edge.
This will prevent any seams from popping open.

To make the envelope cushion back panels

15. Pin the **RS** of the feature panel strip in Fabric 3 to the **RS** of the long edge of one of the Fabric 6 back panels.

Stitch $\frac{1}{4}$ " seam. Press seam towards the band.

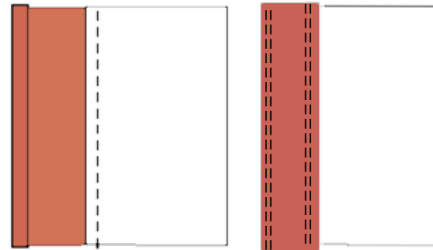


16. Press under $\frac{1}{4}$ " on the other long side of the Fabric 3 panel strip.

Fold the panel over to the front covering the seam.

Press the folded edge. Top stitch $\frac{1}{8}$ " from each edge.

Add further rows of top stitching spaced $\frac{1}{4}$ " apart.



N.B. Fabric 3 is shown unpatterned here so that you can better see the fold and stitch lines.

17. On the other back panel press under $\frac{1}{4}$ " on long edge and fold over another $\frac{1}{2}$ " hem.

Top stitch close to the folded edges.

18. To form envelope back, overlap panels to form a $12\frac{1}{2}$ " x $18\frac{1}{2}$ " rectangle, the same size as the front panel.

Baste to keep in place as shown in diagram.

*The hemmed panel piece should be on the bottom with the patchwork strip on the top.



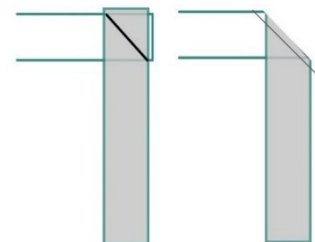
To assemble cushion

19. Pin the cushion front and back **WS** together. Baste a $\frac{1}{4}$ " seam.

20. Prepare the binding from Fabric 1

Join two strips of binding fabric **RS** together at 45° and stitch.

Press seam open and trim to $\frac{1}{4}$ ".



21. Fold and press strip lengthwise with **WS** together.

22. Attach binding to cushion front with binding clips, matching raw edges.

Top tip - Audition the binding before you sew it to the cushion cover to ensure that no binding seams meet on a corner.

23. Stitch a $\frac{1}{4}$ " seam, miter at corners.

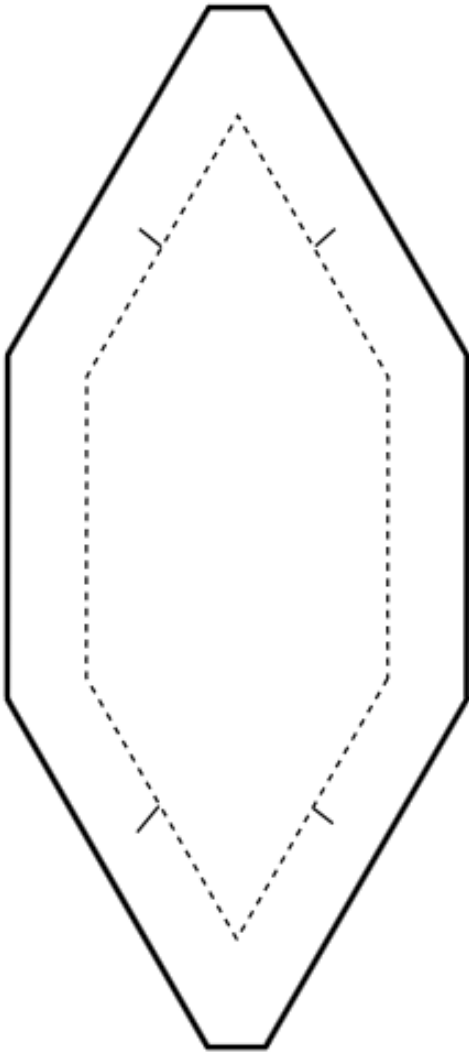
24. Hand stitch binding to the cushion back.

25. Place cushion pad in, sit back and enjoy your cushion.

Fabric Cutting Template - ensure printer is set at 100%.

with 3/8" seam allowance

**1" Test
Square**



1½" Honeycomb - 60°