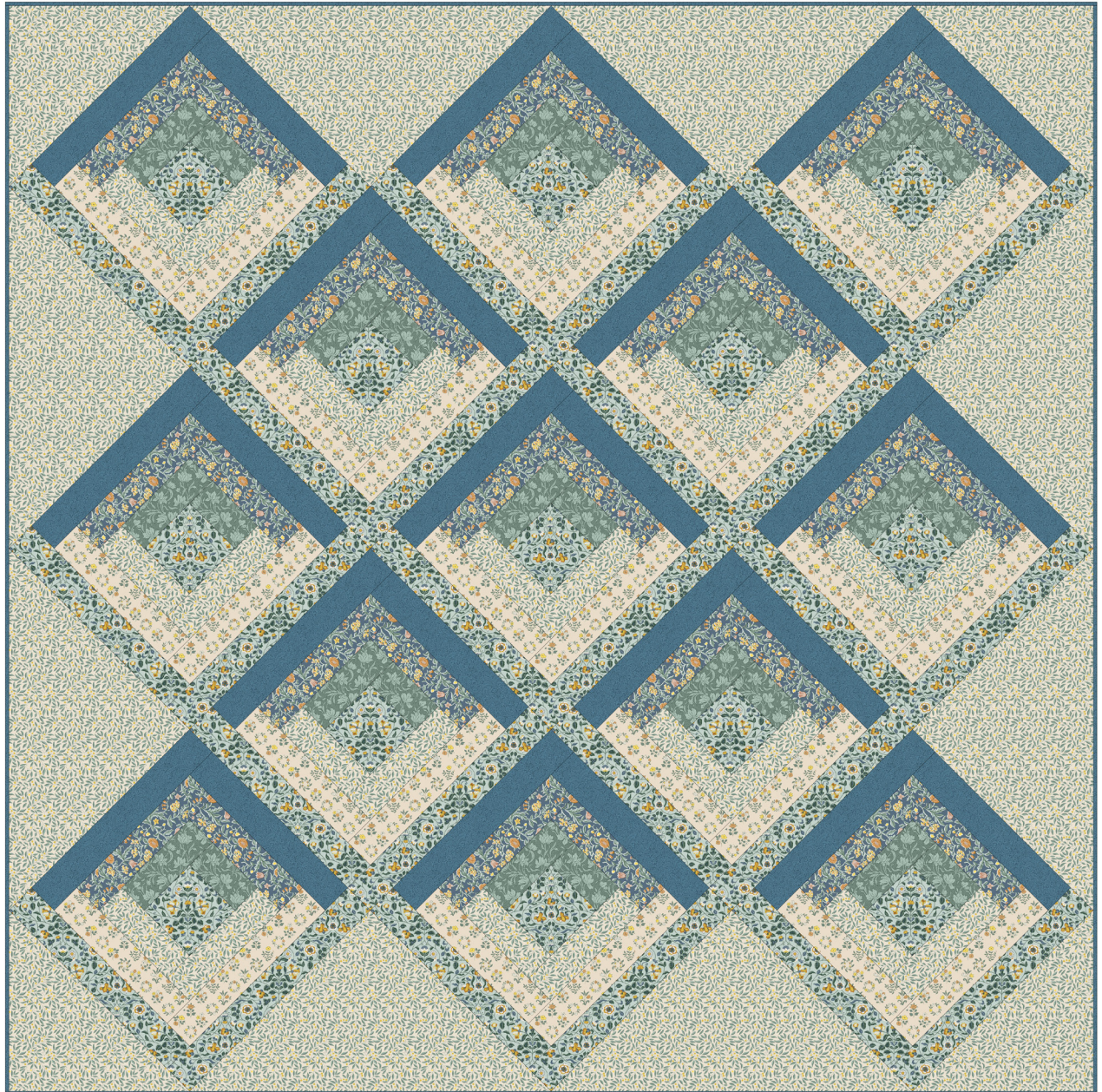


# CRAFT GARDEN LOG CABIN QUILT



FINISHED SIZE - 76" x 76"



## Welcome

---

The Arts and Crafts movement influenced garden design, often using the idea of garden 'rooms' to bring the home outdoors. This quilt is made up using a large, simple log cabin block repeated on point in a layout that echos the imagery and comes together quickly.

## Fabric Requirements

---

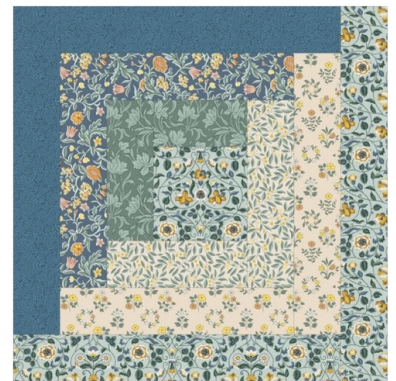
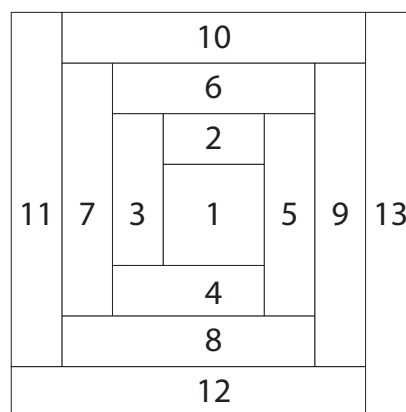
- Tapestry Trail C -  $1\frac{1}{2}$ yds ( $1\frac{1}{2}$ m)
- Craft Blooms C -  $\frac{1}{2}$ yd ( $\frac{1}{2}$ m)
- Stitched Willow C -  $2\frac{1}{4}$ yds (2m)
- May's Flowers C -  $\frac{3}{4}$ yd ( $\frac{3}{4}$ m)
- Mary's Embroidery C -  $\frac{3}{4}$ yd ( $\frac{3}{4}$ m)
- York Fern Twilight - 1 yard (1m)
- Backing -  $2\frac{1}{4}$ yds (2m) of the 108" wide Trailing Honeysuckle
- Binding of your choice -  $\frac{3}{4}$ yd ( $\frac{1}{2}$ m)

## Pattern Notes

---

- Fabric quantities are based on a usable width of 42" unless otherwise stated.
- Please read the pattern through in full before starting.
- All measurements are in inches and seam allowances are  $\frac{1}{4}$ " throughout.
- You will make thirteen (13) identical blocks that will be  $18\frac{1}{2}$ "x $18\frac{1}{2}$ " when made and finish at 18"x18" when joined in the quilt.
- The blocks will be made, pieced together in rows then rotated 45 degrees clockwise to join in the quilt.
- The 'logs' in the block are the cut to the following sizes. (Instructions for cutting the fabrics used in this pattern follow on the next page).

- Piece 1 - 5" Square
- Piece 2 -  $2\frac{3}{4}$ " X 5"
- Piece 3 -  $2\frac{3}{4}$ " X  $7\frac{1}{4}$ "
- Piece 4 -  $2\frac{3}{4}$ " X  $7\frac{1}{4}$ "
- Piece 5 -  $2\frac{3}{4}$ " X  $9\frac{1}{2}$ "
- Piece 6 -  $2\frac{3}{4}$ " X  $9\frac{1}{2}$ "
- Piece 7 -  $2\frac{3}{4}$ " X  $11\frac{3}{4}$ "
- Piece 8 -  $2\frac{3}{4}$ " X  $11\frac{3}{4}$ "
- Piece 9 -  $2\frac{3}{4}$ " X 14"
- Piece 10 -  $2\frac{3}{4}$ " X 14"
- Piece 11 -  $2\frac{3}{4}$ " X  $16\frac{1}{4}$ "
- Piece 12 -  $2\frac{3}{4}$ " X  $16\frac{1}{4}$ "
- Piece 13 -  $2\frac{3}{4}$ " X  $18\frac{1}{2}$ "



## Cutting Guide

---

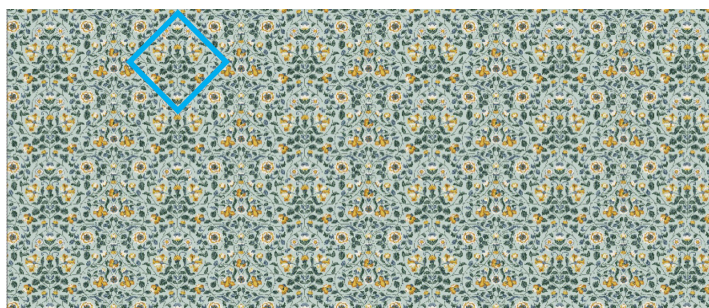
Cut pieces for all 13 blocks and the background before you start using the guide below. Width of the Fabric (WOF) referred to is from selvedge to selvedge. All pieces used in the cabin blocks are  $2\frac{3}{4}$ " wide.

From Tapestry Trail C fabric cut the following:

- (13x)  $2\frac{3}{4}$ " WOF strip, sub cut into;
  - » (x13)  $2\frac{3}{4}$ " X  $16\frac{1}{4}$ " (Piece 12)
  - » (x13)  $2\frac{3}{4}$ " X  $18\frac{1}{2}$ " (Piece 13)
- (13x) 5" Centre squares (see notes below)

NOTE - If you want the centre piece to be fussy cut as in the cover illustration fussy cut on point choosing 5" Squares within the design you'd like to highlight (cutting fig 1). The centre square does not have to be fussy cut, or cut on point but remember when pieced the cabin blocks and, therefore the centre squares, will be rotated 45 degrees. If you use this print in the centre it is directional so cut diagonally.

Remember squares cut on the bias stretch easily so handle gently.



(Cutting fig 1)

From Craft Blooms cut the following:

- (5x)  $2\frac{3}{4}$ " WOF strip, sub cut into;
  - » (x13)  $2\frac{3}{4}$ " X 5" (Piece 2)
  - » (x13)  $2\frac{3}{4}$ " X  $7\frac{1}{4}$ " (Piece 3)

From Stitched Willow cut the following:

- (6x)  $2\frac{3}{4}$ " WOF strip, sub cut into;
  - » (x13)  $2\frac{3}{4}$ " X  $7\frac{1}{4}$ " (Piece 4)
  - » (x13)  $2\frac{3}{4}$ " X  $9\frac{1}{2}$ " (Piece 5)

You will use the extra Stitched Willow fabric to create the background. Instructions for cutting the background are on the next page.

From May's Flowers cut the following:

- (8x)  $2\frac{3}{4}$ " WOF strip, sub cut into;
  - » (x13)  $2\frac{3}{4}$ " X  $9\frac{1}{2}$ " (Piece 6)
  - » (x13)  $2\frac{3}{4}$ " X  $11\frac{3}{4}$ " (Piece 7)

## Cutting Guide continued

From May's Embroidery cut the following:

- (9x)  $2\frac{3}{4}$ " WOF strip, sub cut into;
  - » (x13)  $2\frac{3}{4}$ " X  $11\frac{3}{4}$ " (Piece 8)
  - » (x13)  $2\frac{3}{4}$ " X 14" (Piece 9)

From York Fern Twilight cut the following:

- (11x)  $2\frac{3}{4}$ " WOF strip, sub cut into;
  - » (x13)  $2\frac{3}{4}$ " X 14" (Piece 10)
  - » (x13)  $2\frac{3}{4}$ " X  $16\frac{1}{4}$ " (Piece 11)

From the Background Fabric (Stitched Willow)

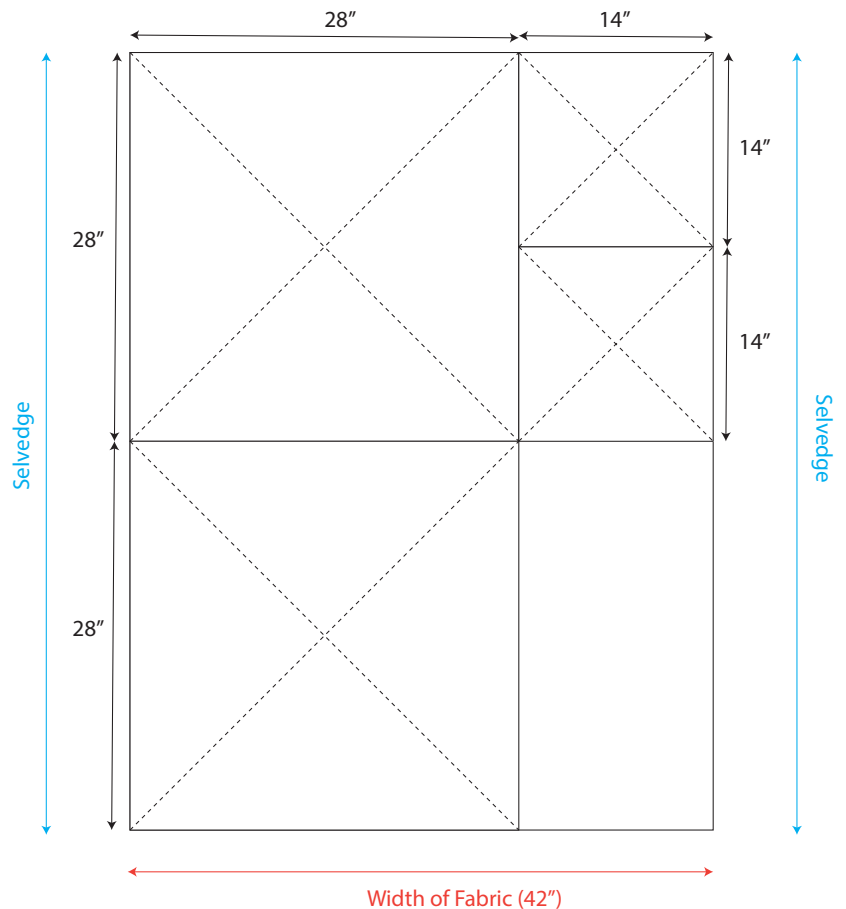
You need four (4) corner triangles and eight (8) outer edge triangles to construct the quilt. It is best to cut them from squares of fabric (see cutting diagram). This means that the outer edges are on grain rather than a bias edge which can stretch and bow and make trimming the quilt more difficult.

Cutting the background from Stitched Willow

- Cut 2 pieces 28" square
- Cut 2 pieces 14" square

For the 28" Square pieces fold the square from corner to corner and finger press the seam, fold again and do the same. Open up and cut along the crease lines from corner to corner to create 4 Triangles from each square. You will have a total of eight (8) triangles that will be added to the end of the rows.

From the 14" Squares Fold in half from corner to corner and finger press the seam. Open and cut from corner to corner creating 2 triangles from each square. You will have a total of four (4) corner triangles.



(cutting diagram)

## Block Construction

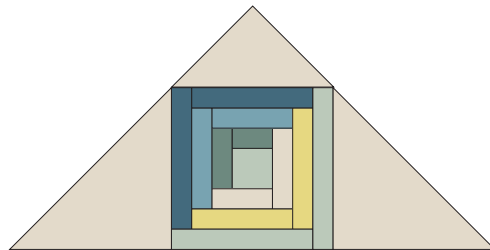
1. To construct blocks work out from the middle, in numerical order. Use a  $\frac{1}{4}$ " seam to join the pieces.
2. Press after sewing each seam, you can either press open or to one side, as preferred.
3. Make thirteen (13) identical blocks.

## Making the rows

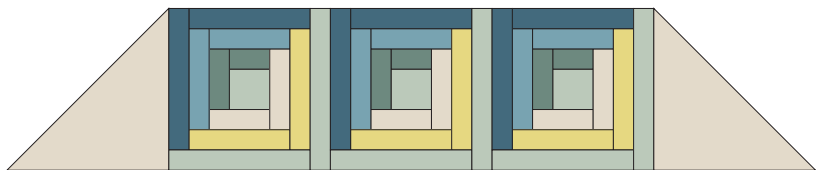
The rows are created by sewing the cabin blocks together and then sewing triangles to the end of the rows. For rows 1 and 5 you will also sew a corner triangle to the top (or bottom edge), do this after sewing the end of rows triangles.

4. Using the row diagrams below, sew together the five rows that are needed.

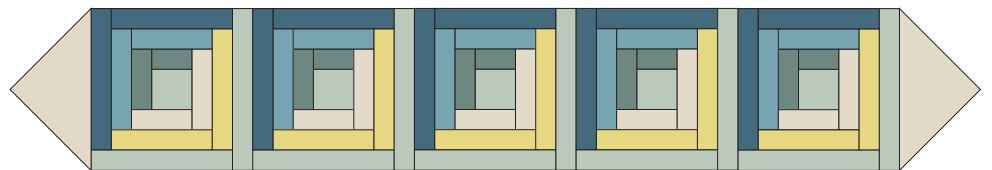
Row 1  
(1x) Cabin Block  
(2x) End of Row Triangles  
(1x) Corner Triangle



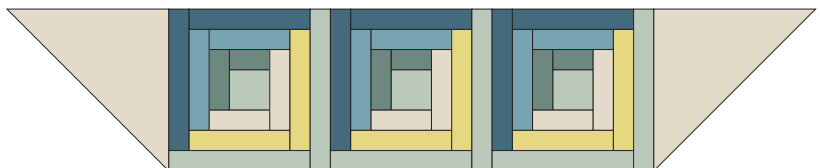
Row 2  
(3x) Cabin Block  
(2x) End of Row Triangles



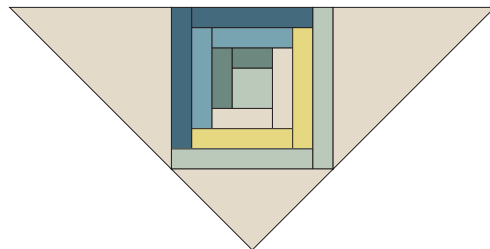
Row 3  
(5x) Cabin Block  
(2x) Corner Triangles



Row 4  
(3x) Cabin Block  
(2x) End of Row Triangles



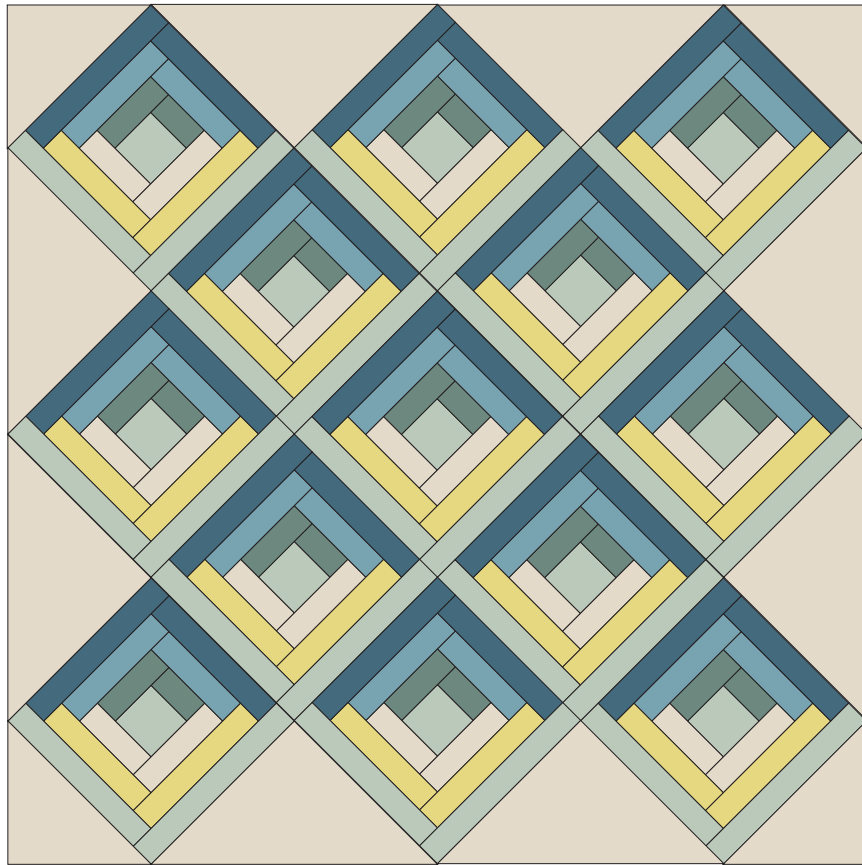
Row 5  
(1x) Cabin Block  
(2x) End of Row Triangles  
(1x) Corner Triangles



## Finishing the quilt

---

5. Sew the five rows together diagonally with row 5 at the bottom left and row 1 at the top right. Use the layout diagram below to check all of your rows are orientated correctly.



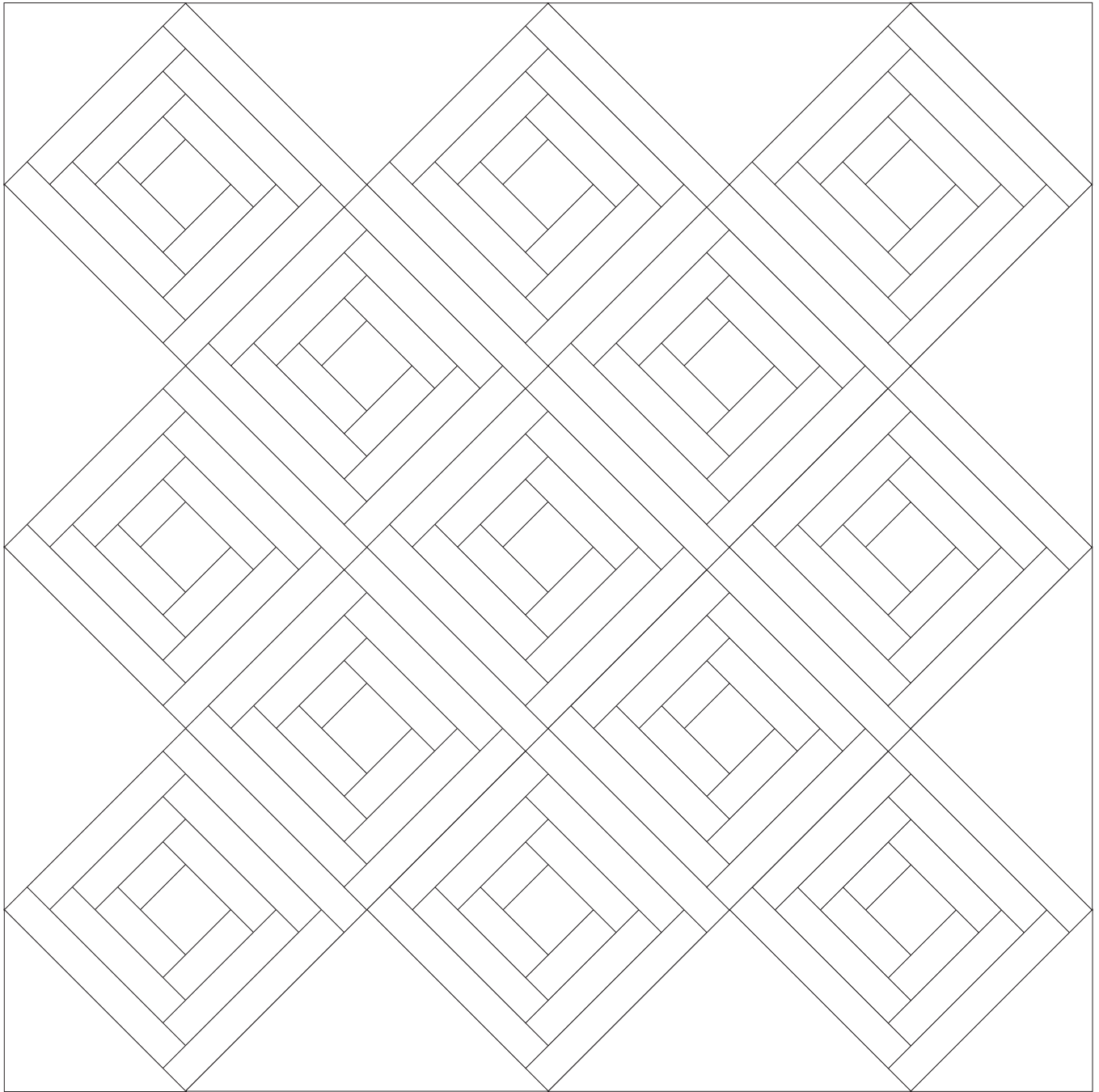
(layout diagram)

6. Once the top is constructed you can finish your quilt. Layer the backing wrong side up, followed by the batting and quilt top right side up. Baste and quilt as desired.

7. Trim the excess batting and backing and square up the quilt.

8. Bind as desired.

IDEA - Got some scraps left over? You can use any fabric offcuts leftover to make scrappy cushions or smaller projects such as zipper pouches, they make great gifts.



Pattern for personal use only. This pattern may not be reproduced, copied, shared or distributed in any way. You may sell items made from this pattern as long as they are made by you, on a small scale and please credit Leisa Morris White (Morris Fabrics) as the pattern designer. Many thanks!